



# Writing Desk

Free Plans to build a Writing Desk.



## Materials and Tools

### MATERIALS:

- 1-1/4" pocket hole screws
- 1-1/4" brad nails
- Edge banding, optional
- 1 set of 20" drawer slides
- Wood glue
- Sandpaper (100, 150, 220 grits)
- Finishing supplies (primer & paint, or stain, sealer)

### Lumber:

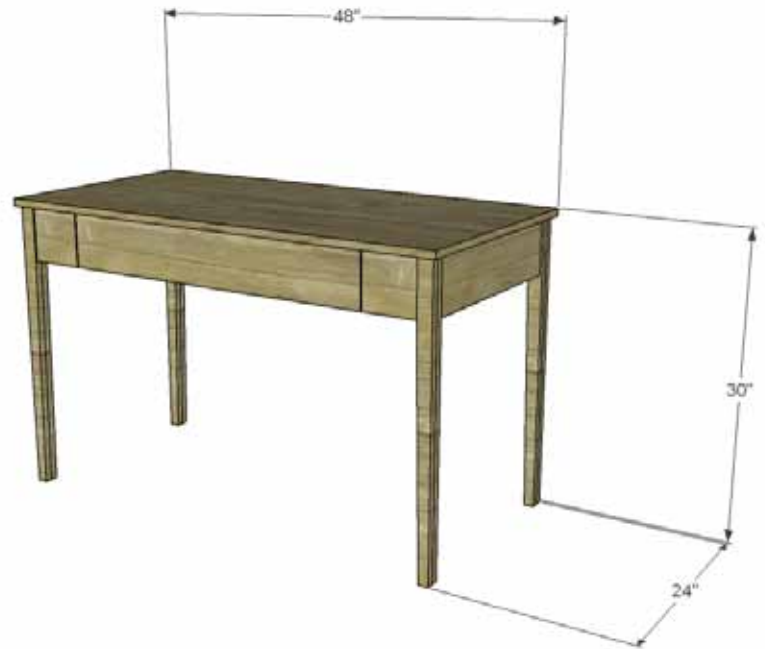
- 2 - 4' x 4' x 3/4" PureBond plywood project panels (Alder was used for the example)

### Tools:

- Jigsaw, table saw, miter saw, or hand saw
- Pocket hole jig
- Brad nailer
- Drill
- Pencil, ruler, square
- Tape measure
- Sander
- Iron for edge banding
- Edge banding trimmer or craft knife

### Cut List:

- 8 - 3/4" PureBond Plywood project panel at 1-1/2" x 29-1/4" - Legs
- 2 - 3/4" PureBond Plywood project panel at 5-1/2" x 20" - Side Panels
- 1 - 3/4" PureBond Plywood project panel at 5-1/2" x 44" - Back
- 2 - 3/4" PureBond Plywood project panel at 5-1/2" x 5-1/2" - Front
- 2 - 3/4" PureBond Plywood project panel at 5-1/2" x 21" - Drawer Supports
- 1 - 3/4" PureBond Plywood project panel at 24" x 48" - Top
- 1 - 3/4" PureBond Plywood project panel at 18-1/2" x 30-1/2" - Drawer Box Bottom
- 2 - 3/4" PureBond Plywood project panel at 4-1/2" x 18-1/2" - Drawer Box Sides
- 2 - 3/4" PureBond Plywood project panel at 4-1/2" x 32" - Drawer Box Front & Back
- 1 - 3/4" PureBond Plywood project panel at 5-3/8" x 32-3/4" - Drawer Front



FEATURING  
**PureBond**<sup>®</sup>  
FORMALDEHYDE-FREE TECHNOLOGY



## STEP 1

**Notes:**

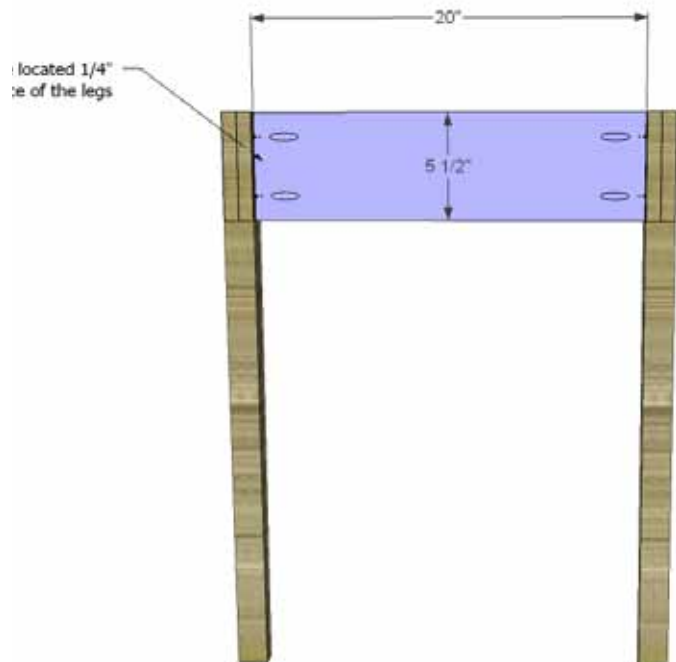
Edge banding will be applied to the exposed edges of the plywood prior to assembly.

Cut the pieces for the legs. There will be eight pieces cut, and they will be laminated together in pairs to form the leg. Spread glue on the face of one piece then layer the next piece on top. Wiggle it a little to create suction then secure together with 1-1/4" brad nails. When dry, apply edge banding to the exposed edges of the legs then trim the excess banding away. Cut the leg to length and cut the taper using a tapering jig on the table saw. The taper is optional!



## STEP 2

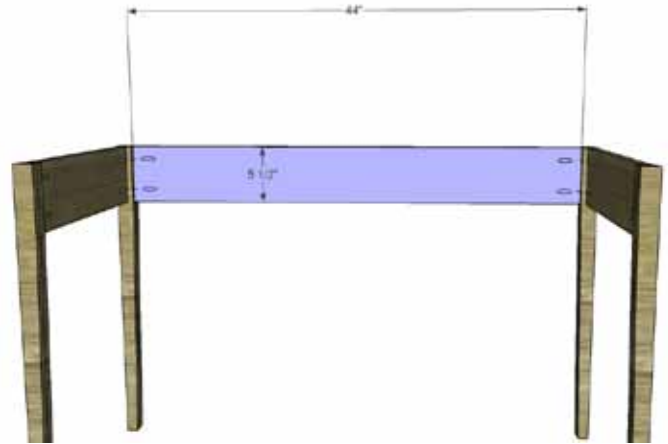
Cut the pieces for the side panels. With the pocket hole jig set for 3/4" material, drill pocket holes in each end of the panels. Secure the panels to the legs using glue and 1-1/4" pocket hole screws. The panels will be located 1/4" back from the outside face of the legs.





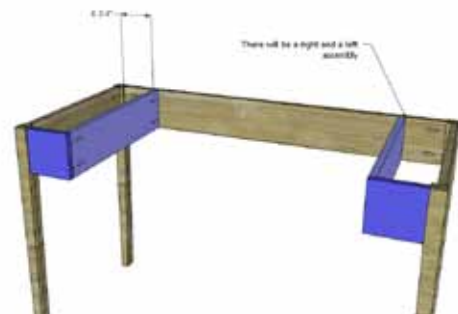
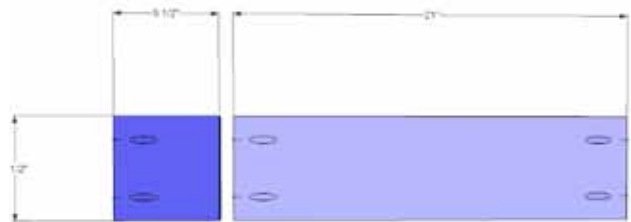
## STEP 3

Cut the pieces for the back and drill pocket holes in each end. Secure the back to the legs using glue and 1-1/4" pocket hole screws. The back piece will be located 1/4" back from the outside face of the legs.



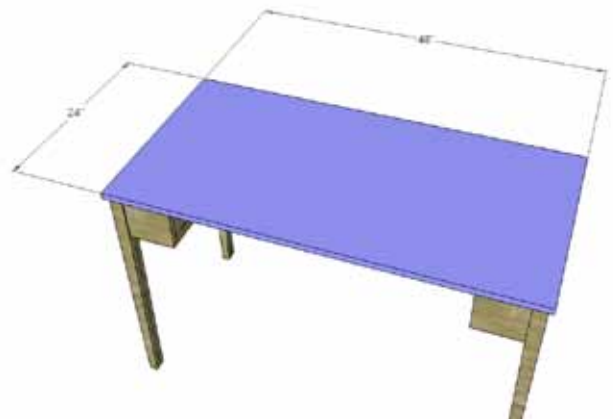
## STEP 4

Cut the pieces for the front and the drawer supports. Drill pocket holes in each end of the supports and one end only of the fronts. Install the front pieces first positioning them 1/4" back from the outside face of the legs using glue and 1-1/4" pocket hole screws. Install the drawer supports securing them to the back and to the front using glue and 1-1/4" pocket hole screws.



## STEP 5

Cut the pieces for the top. The top will overhang the front and sides by 1/2" at the legs. Secure to the legs, sides, front, and back using glue and 1-1/4" brad nails.



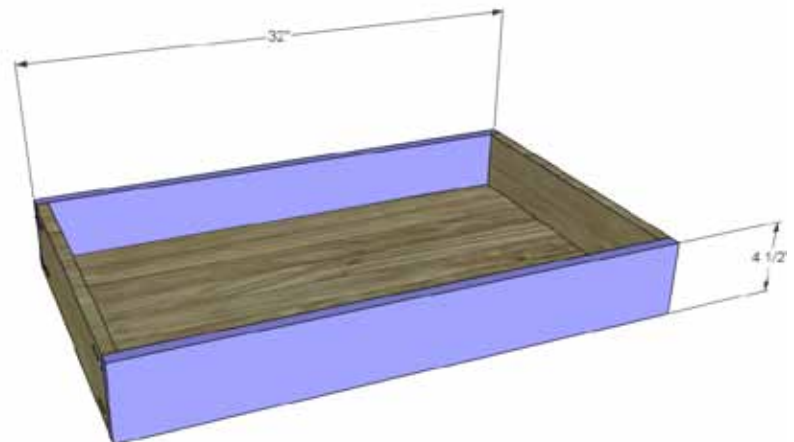
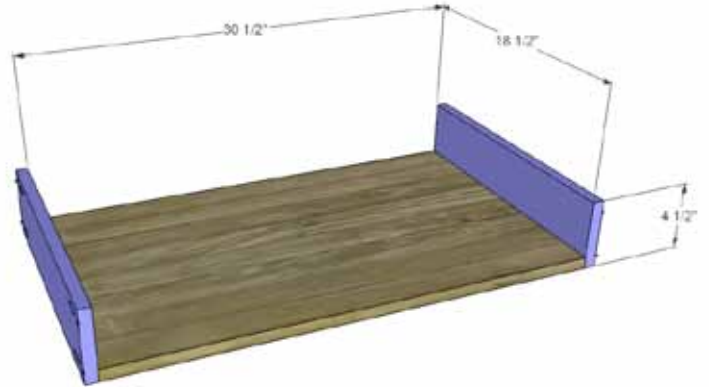


## STEP 6

Cut the pieces for the drawer box. Drill pocket holes in each end of the side pieces as well as all four edges of the bottom. Secure the sides to the bottom using glue and 1-1/4" pocket hole screws.

Secure the front and back pieces to the sides and bottom using glue and 1-1/4" pocket hole screws.

Install the drawer slides according to the manufacturer's installation instructions locating them 3/4" back from the front edge to accommodate the inset drawer front.





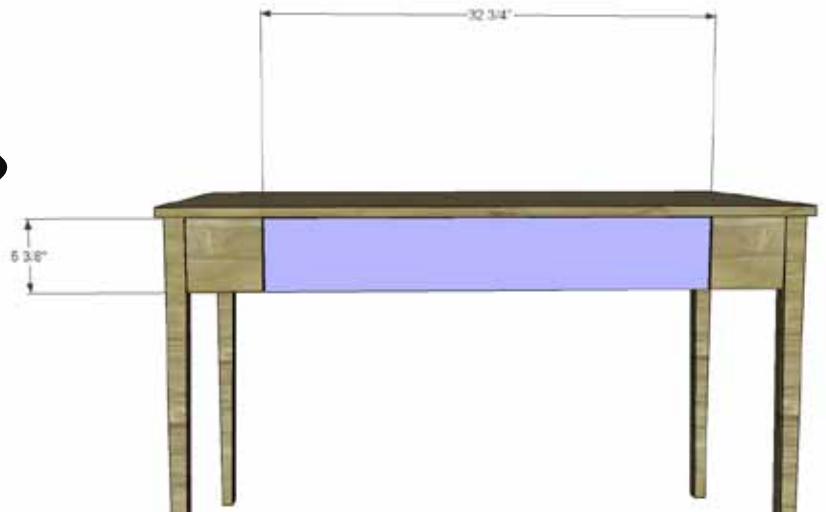
# Writing Desk



## STEP 7

Cut the pieces for the drawer front. Mark the position for the cabinet pulls then drill the holes for them. There will be a 1/8" gap around all sides of the drawer fronts in the openings. Shim the drawer front in place, then drive a screw in each hole for the cabinet pull into the drawer box. Open the drawer, then secure the front to the drawer box using 1-1/4" screws from the inside. Remove the screws from the holes drilled for the cabinet pulls, then finish drilling the holes. Install the cabinet pulls.

Finish as desired.



FEATURING

 PureBond.®

FORMALDEHYDE-FREE TECHNOLOGY

Available at most Home Depot stores.