

Pottery Barn Inspired
Armoire

Free Plans to build an Armoire

PureBond[®]
 FORMALDEHYDE-FREE TECHNOLOGY

Materials and Tools:

Materials:

- 2 - sheets 3/4" PureBond plywood ripped into 21 3/4" wide strips
- 2 - sheets 1/4" PureBond plywood (for back and doors)
- 8 - 1x3 @ 8 feet long
- 2 - 1x4 @ 8 feet long
- 1 - 2x2 @ 8 feet long
- 1 - 1x2 @ 8 feet long
- 1 1/4" pocket hole screws, 1 1/4" and 2" finish nails
- 6 Hinges
- 2 Magnetic Clasps
- 2 Knobs

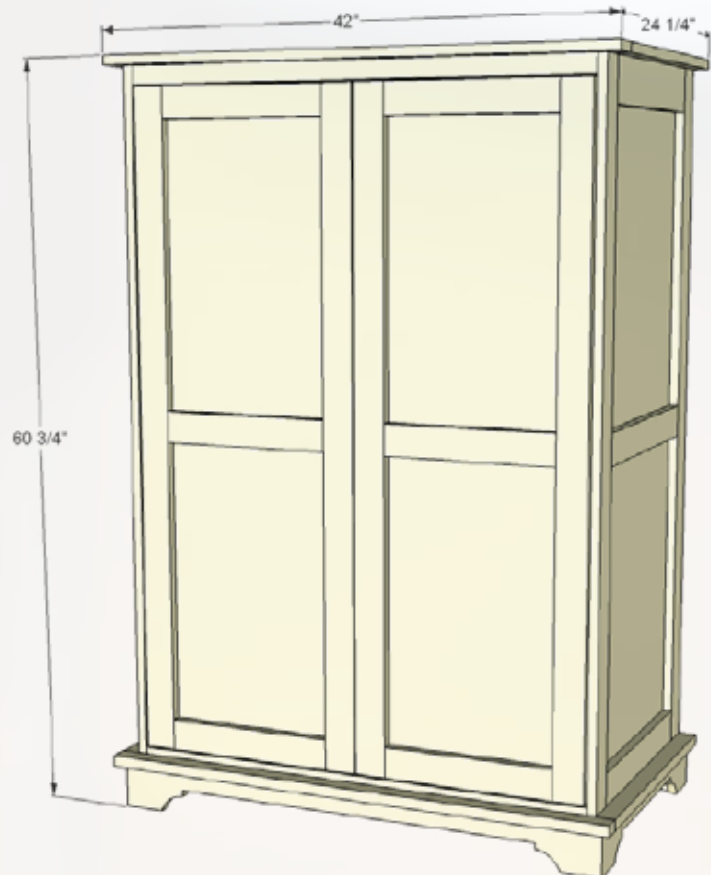
Cut List:

- 2 - 3/4" plywood @ 21 3/4" x 59" (sides)*
- 1 - 3/4" plywood @ 21 3/4" x 42" (top)
- 1 - 3/4" plywood @ 21 3/4" x 36 1/2" (shelves)
- 4 - 1x3 @ 59" (side frame)*
- 4 - 1x4 @ 18 1/4" (side frame)
- 2 - 1x3 @ 18 1/4" (side frame)
- 1 - 1/4" plywood @ 59 3/4" x 38 1/2" (back)*
- 2 - 2x2 @ 38" (top/bottom supports)
- 1 - 1x3 @ 42" (top front)
- 1 - 1x4 @ 41" (long point to long point, both ends cut NOT parallel at 45 degree BEVEL)
- 2 - 1x4 @ 24" (long point, one end cut at 45 degree BEVEL)
- 1 - 1x2 @ 42 1/2" (long point to long point, both ends cut NOT parallel at 45 degree ANGLE)
- 2 - 1x2 @ 24 3/4" (long point, one end cut at 45 degree ANGLE)
- Additional shelves are 3/4" plywood @ 21 3/4" x 36 1/2"

Doors - Cut List:

- 4 - 1x3 @ 52 1/4"*
- 6 - 1x3 @ 13 3/4" (cut these to fit as 1x3 widths may vary in size - overall door width should be 18 3/4" or half the overall opening minus 1/4")
- 1/4" back plywood is 18 3/4" x 52 1/4"*

**Starred cut list items have been shortened by 1" and will not match diagrams. This is because I opted to shorten to make the pieces fit on a single sheet of plywood.*





Pottery Barn Inspired Armoire

Free Plans to build an Armoire

PureBond[®]
FORMALDEHYDE-FREE TECHNOLOGY

General Instructions:

Please read through the entire plan and all comments before beginning this project. It is also advisable to review the Getting Started Section. Take all necessary precautions to build safely and smartly. Work on a clean level surface, free of imperfections or debris. Always use straight boards. Check for square after each step. Always predrill holes before attaching with screws. Use glue with finish nails for a stronger hold. Wipe excess glue off bare wood for stained projects, as dried glue will not take stain. Be safe, have fun, and ask for help if you need it. Good luck!

Step #1

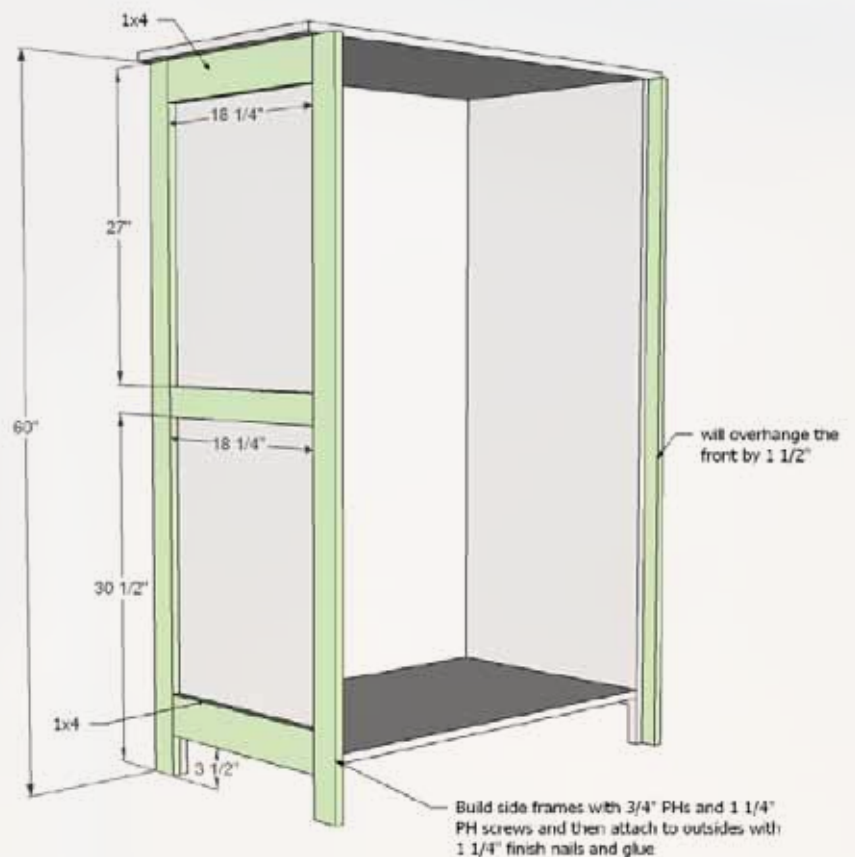
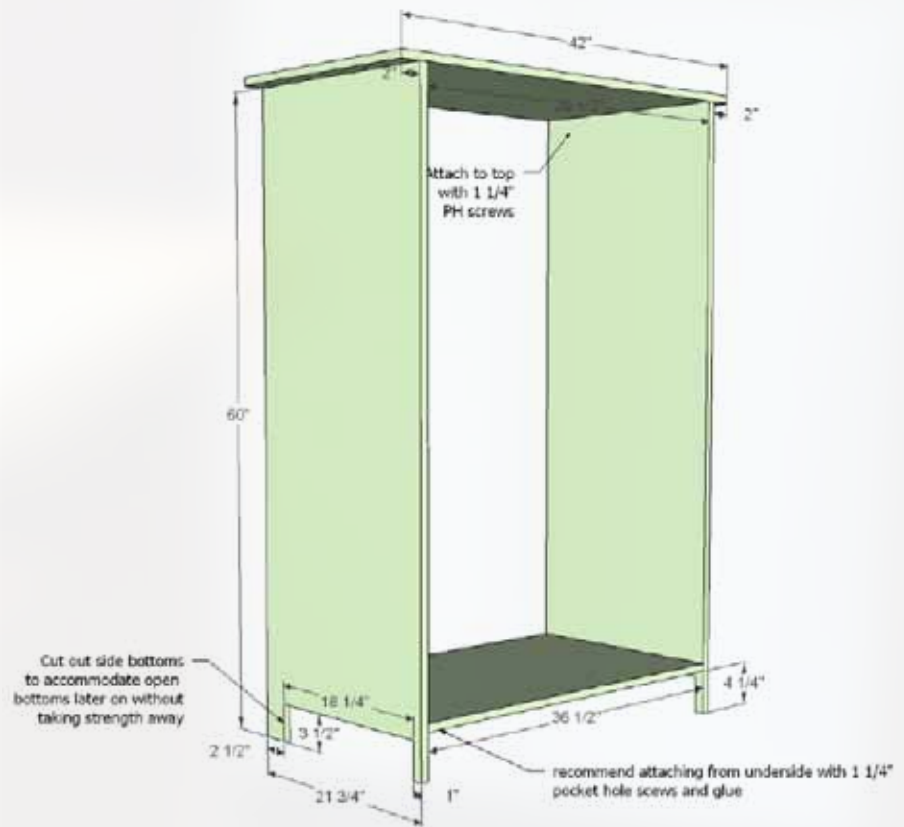
Attach sides to the top and add bottom shelf. Note all overhangs and mark before attaching. Recommended joinery is 3/4" pocket holes and 1 1/4" pocket hole screws.

NOTE:

I shortened the side length by 1" to allow for plywood cutting efficiency. This does not change placement of bottom shelf.

Step #2

Build the side frames separately, and then attach to sides of the toy armoire, with the back flush to the back of the plywood. Front will overhang 1 1/2".



Pottery Barn Inspired
Armoire

Free Plans to build an Armoire

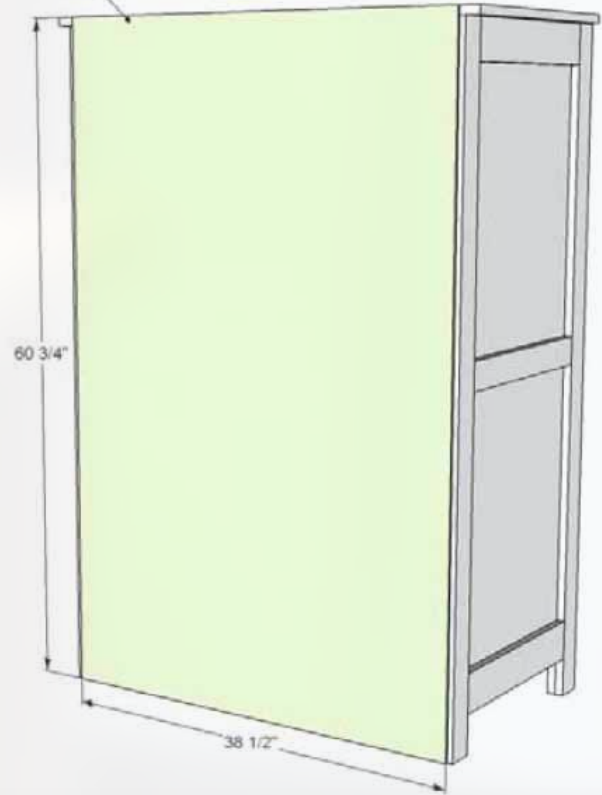
PureBond.
FORMALDEHYDE-FREE TECHNOLOGY

Step #3



Attach back to back with glue and finish nails.

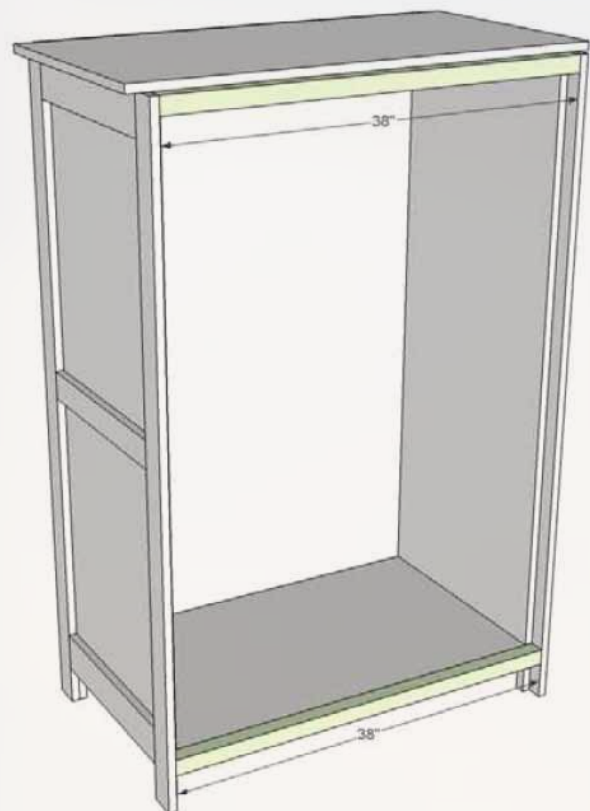
Nail back on with glue



Step #4



Attach top and bottom with 3/4" pocket holes and 1 1/2" pocket hole screws. Hide pocket holes on underside of bottom, top side of top.



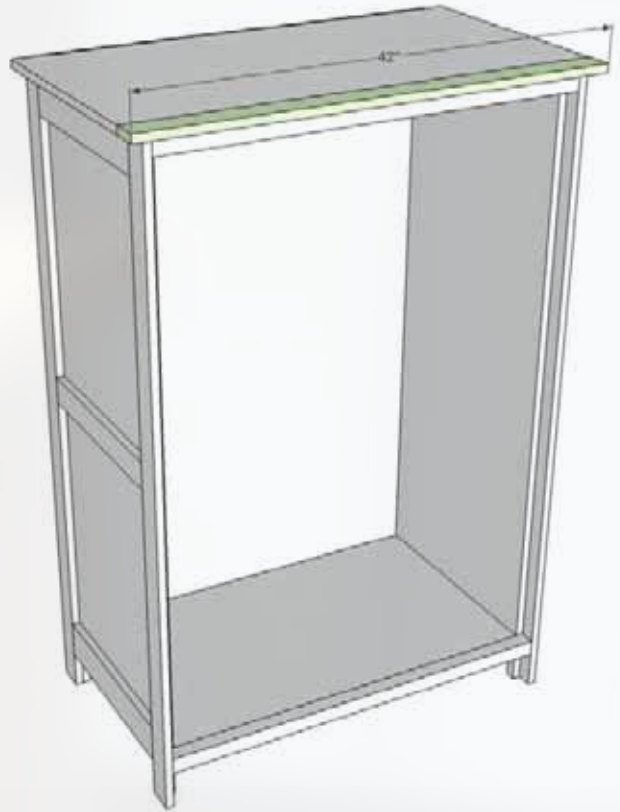
Pottery Barn Inspired
Armoire

Free Plans to build an Armoire

PureBond.
FORMALDEHYDE-FREE TECHNOLOGY

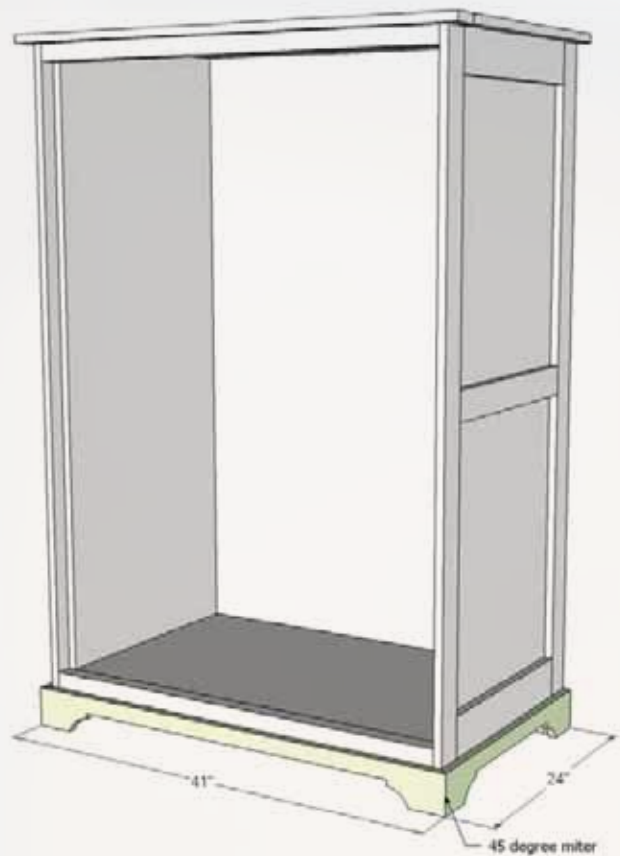
Step #5

Attach top front header with finish nails and glue.



Step #6

Attach base to the bottom.





Pottery Barn Inspired

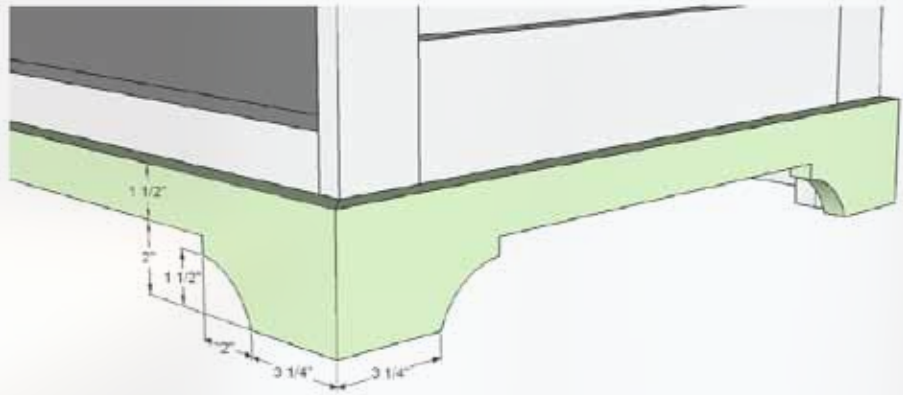
Armoire

Free Plans to build an Armoire

PureBond.
FORMALDEHYDE-FREE TECHNOLOGY

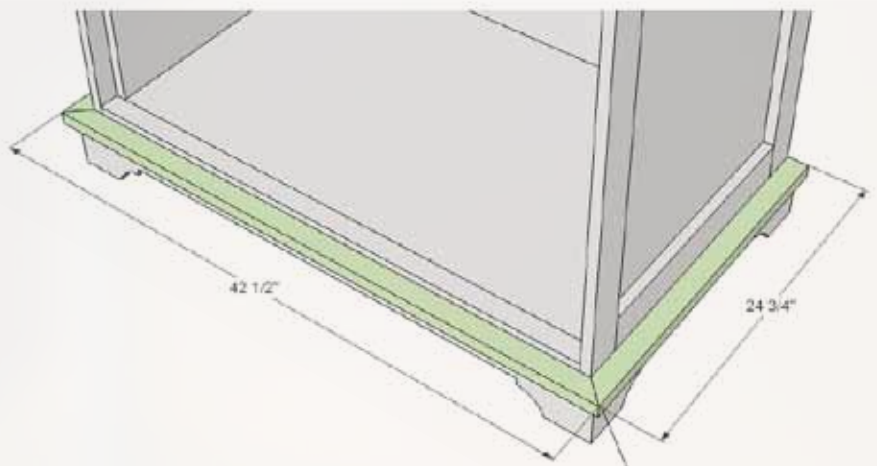
Step #7

Cut out with a jigsaw as shown in diagram.



Step #8

Cut top of footer and nail and glue in place.



Pottery Barn Inspired
Armoire

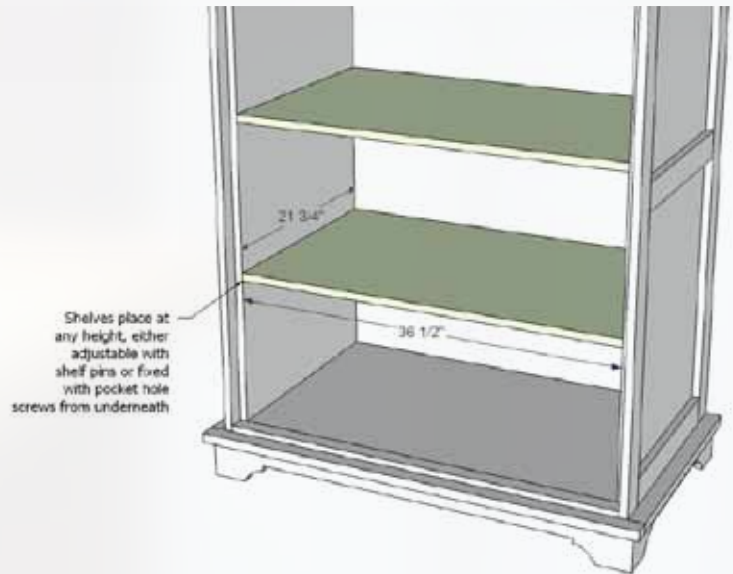
Free Plans to build an Armoire

PureBond.
FORMALDEHYDE-FREE TECHNOLOGY

Step #9



Add shelves to the armoire if desired. We will be adding a drawer insert plan soon too!



Step #10



Measure and build your doors to fit, leaving about 1/8" gap around all sides.

Preparation Instructions:

Fill all holes with wood filler and let dry. Apply additional coats of wood filler as needed. When wood filler is completely dry, sand the project in the direction of the wood grain with 120 grit sandpaper. Vacuum sanded project to remove sanding residue. Remove all sanding residue on work surfaces as well. Wipe project clean with damp cloth. It is always recommended to apply a test coat on a hidden area or scrap piece to ensure color evenness and adhesion. Use primer or wood conditioner as needed.



FEATURING
PureBond.
FORMALDEHYDE-FREE TECHNOLOGY

www.purebondplywood.com