

# Daybed

Free Plans to build a World Market inspired Raya Daybed

**PureBond.**  
FORMALDEHYDE-FREE TECHNOLOGY

## Materials and Tools:

### MATERIALS:

- Crib mattress – example measures 28" x 52"
- Outdoor fabric and lots of plastic grocery bags
- 1-1/4" pocket hole screws
- 2-1/2" pocket hole screws
- 1-1/4" screws or 1-1/4" brad nails
- Finishing Supplies

### Lumber:

- 6 – 2x2 at 8" (or 3 – 2x4 ripped in half)
- 2 – 1x2 at 6"
- 1 – 1x3 at 6"
- 5 – 1x3 at 8" (or 2 – 1x6 at 8")
- 1 sheet of 3/4" PureBond plywood

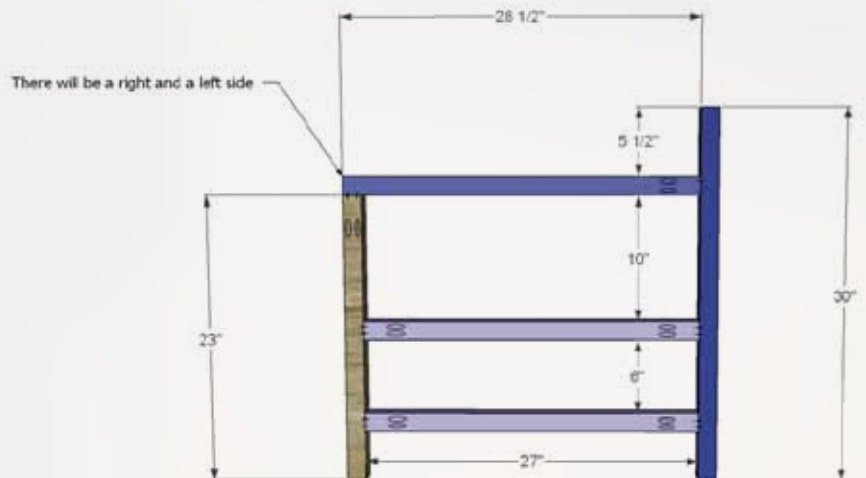
### Cut List:

- 2 – 2x2 at 23" – Front Legs
- 2 – 2x2 at 30" – Back Legs
- 2 – 2x2 at 28-1/2" – Arms
- 4 – 2x2 at 27" – Side Stretchers
- 5 – 2x2 at 52" – Long Stretchers
- 2 – 3/4" plywood at 10" x 27" – Side Panels
- 1 – 3/4" plywood at 15-1/2" x 52" – Back Panel
- 2 – 1x1 (these can be ripped off of a 1x3) at 52" – Cleats
- 2 – 1x2 at 52" – Cleats
- 15 – 1x3 at 27" – Slats

## Step #1



Cut the pieces for the legs, arms, and side stretchers. Drill pocket holes in one end of each of the front legs as well as the arms, and in each end of the stretchers. Assemble as shown using glue and 2-1/2" pocket hole screws.





# Daybed

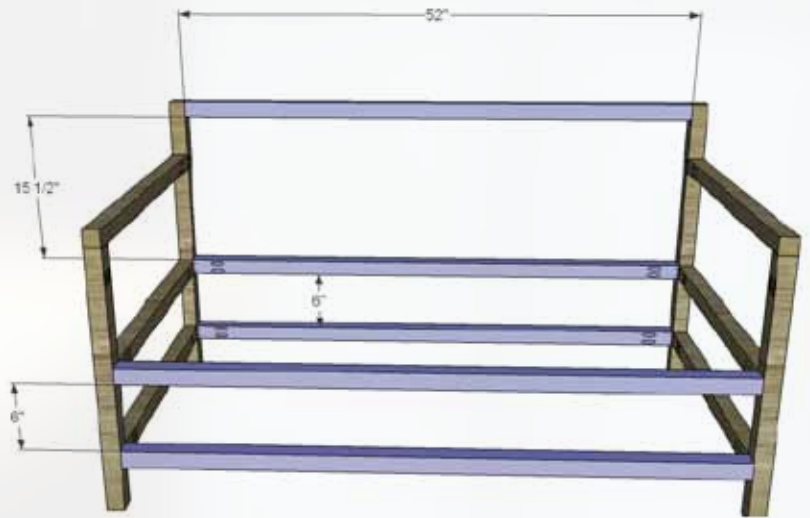
Free Plans to build a World Market inspired Raya Daybed

**PureBond.**  
FORMALDEHYDE-FREE TECHNOLOGY

## Step #2



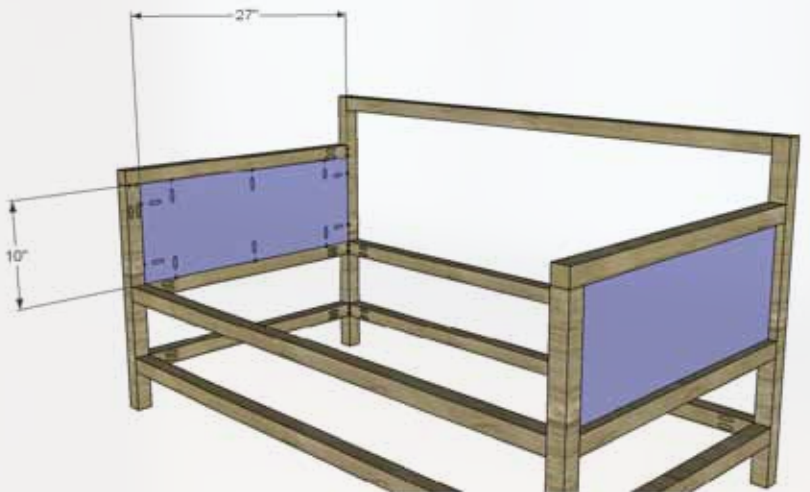
Cut the pieces for the long stretchers and drill pocket holes in each end. Attach to the sides as shown using glue and 2-1/2" pocket holes.



## Step #3



Cut the pieces for the side panels and drill pocket holes in all four edges. Position so that the inside face of the panel is flush with the inside face of the side frame (the pocket holes can face in or out). Secure in place using glue and 1-1/4" pocket hole screws.

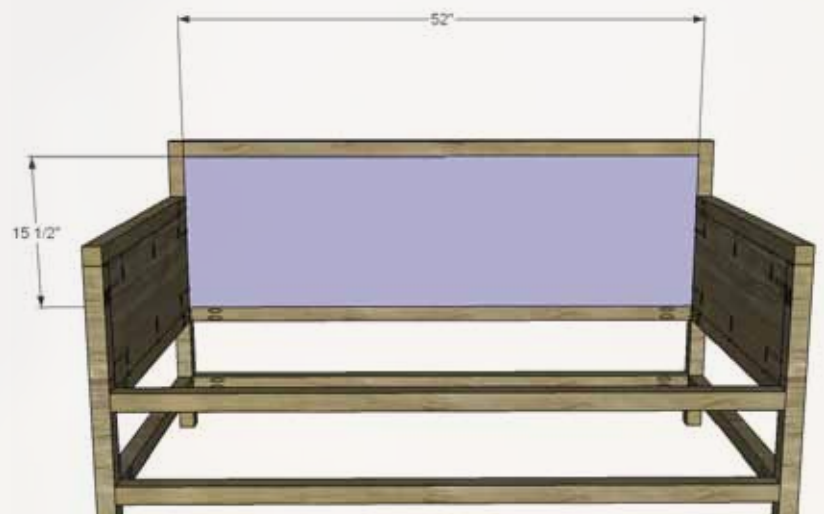


## Step #4



Cut the piece for the back panel and drill pocket holes in all four edges. The piece of plywood I had on hand was not quite long enough so I joined a piece at each end, with a 1x2 cleat on the back.

This can be done so that a half sheet of plywood can be purchased instead of a full sheet. Position so that the inside face of the panel is flush with the inside face of the side frame (the pocket holes can face in or out). Secure in place using glue and 1-1/4" pocket hole screws.





# Daybed

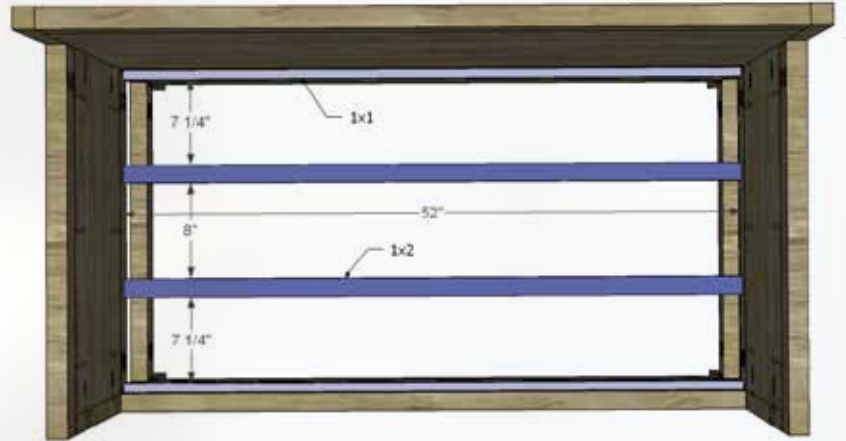
Free Plans to build a World Market inspired Raya Daybed



## Step #5



Cut the pieces for the cleats and drill pocket holes in each end of the 1x2 pieces. The 1x1 pieces can be secured using countersunk 1-1/4" screws or 1-1/4" brad nails. Secure the 1x2 cleats as shown using glue and 1-1/4" pocket hole screws.



## Step #6



Cut the pieces for the slats. Secure to the cleats using glue and countersunk 1-1/4" screws or 1-1/4" brad nails.

Fill all exposed holes, then finish the daybed as desired! I painted the entire daybed with Behr in Mermaid Treasure.

Create a Basic Box Cushion for the mattress, then create the plastic-bag-stuffed cushions, and you are set!



FEATURING



FORMALDEHYDE-FREE TECHNOLOGY

[www.purebondplywood.com](http://www.purebondplywood.com)