



Hutch

Free Plans to build a Restoration Hardware inspired hutch.

PureBond[®]
FORMALDEHYDE-FREE TECHNOLOGY

Materials and Tools:

MATERIALS:

- 2 sheets of 3/4" PureBond plywood cut into strips 15 3/4" wide by 8 feet long (with sideboard, you may be able to get away with just 3 sheets altogether) These are referred to as 1x16 boards throughout this plan.
- 1 - 1x6 @ 8 feet long
- 5 - 1x3 @ 8 feet long
- 1 - 4' stick 2 1/4" base moulding
- 2 - 1x4 @ 8 feet long
- 1 - 1x2 @ 8 feet long
- 2 sheets 1/4" PureBond plywood or other materials for back
- 1 1/4" PH screws
- 1 1/4" finish nails
- 10 feet of medium to large crown moulding
- Wood Glue
- Wood Filler
- 120 Grit Sandpaper

Tools:

- Measuring Tape
- Square
- Pencil
- Safety Glasses
- Hearing Protection
- Kreg Jig™
- Drill
- Circular Saw
- Compound Miter Saw
- Nailer
- Sander
- Countersink Drill Bit

Cut List:

- 2 - 1x16 @ 58"
- 2 - 1x6 @ 10 3/4"
- 2 - 1x3 @ 10 3/4"
- 4 - 1x3 @ 58"
- 4 - 2 1/4" base moulding @ 10 3/4"
- 1 - 1x16 @ 70 1/2"
- 1 - 1x16 @ 57 1/4"
- 2 - 1x4 @ 34 7/8"
- 1 - 1x6 @ 66 1/2"
- 2 - 1x4 @ 58"
- 1 - 1x3 @ 51"
- 1 - 1x2 @ 66 1/2"
- 6 - 1x16 @ 34 7/8"
- 1/4" PureBond plywood or planks for back





Hutch

Free Plans to build a Restoration Hardware inspired hutch.

PureBond.
FORMALDEHYDE-FREE TECHNOLOGY

General Instructions:

Please read through the entire plan and all comments before beginning this project. It is also advisable to review the Getting Started Section. Take all necessary precautions to build safely and smartly. Work on a clean level surface, free of imperfections or debris. Always use straight boards. Check for square after each step. Always predrill holes before attaching with screws. Use glue with finish nails for a stronger hold. Wipe excess glue off bare wood for stained projects, as dried glue will not take stain. Be safe, have fun, and ask for help if you need it. Good luck!

Step #1

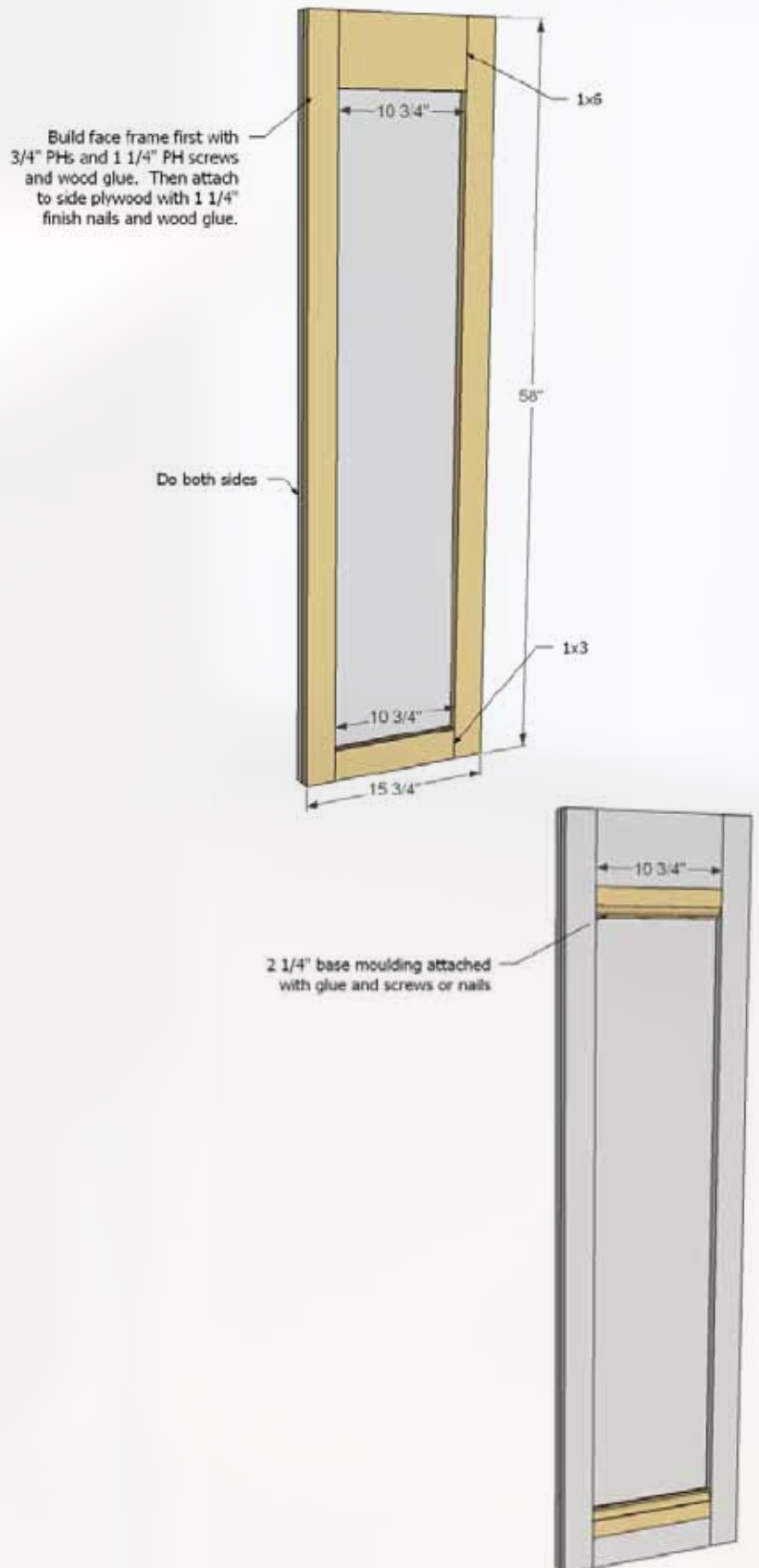


Let's start by making the ends pretty. These will be at eye height. If you want, you can build the frame first, then attach to plywood second.

Step #2



Now add the moulding in. You may have to use shorter nails depending on your moulding thickness. Glue will also hold the moulding in place, as it's just decorative.





Hutch

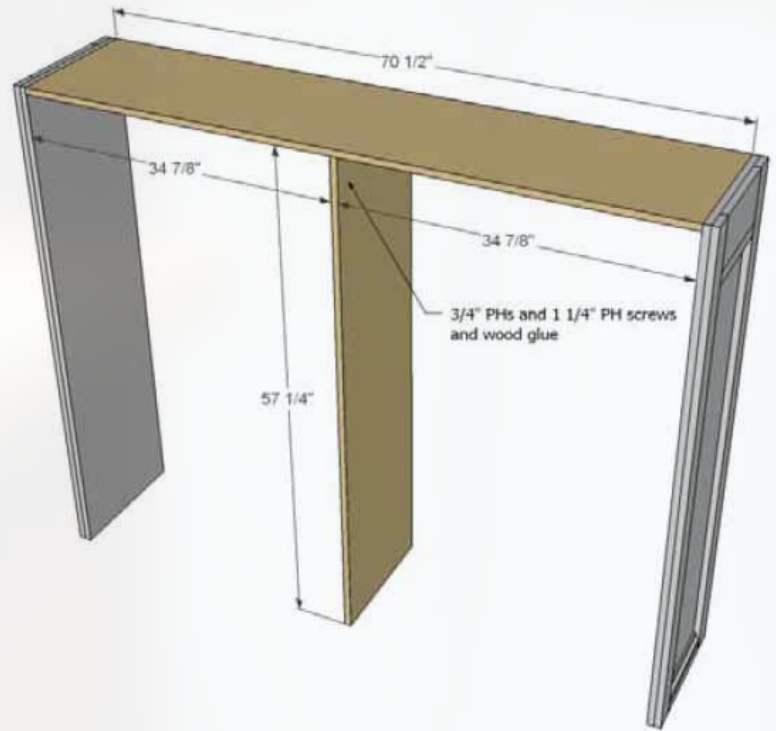
Free Plans to build a Restoration Hardware inspired hutch.

PureBond.
FORMALDEHYDE-FREE TECHNOLOGY

Step #3



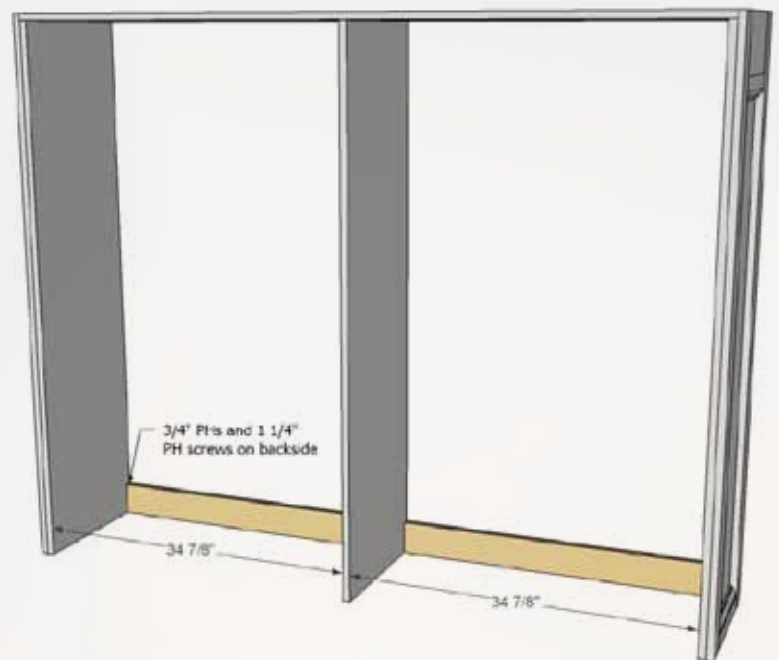
Now we are starting the hutch itself. Attach top and center. I recommend attaching with pocket holes, but it's totally up to you.



Step #4



These boards will keep the back square and give you something to attach the back to. I recommend pocket holes on the back side.





Hutch

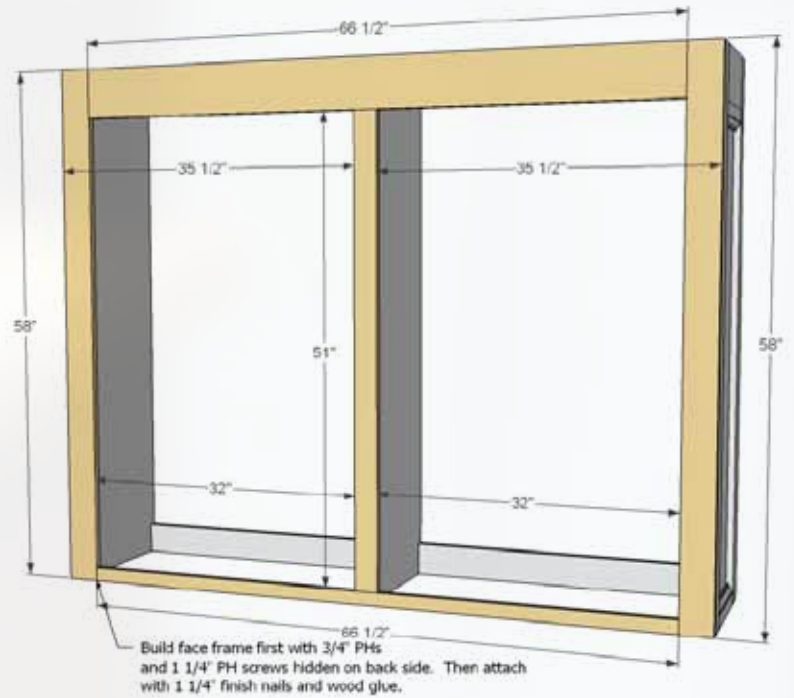
Free Plans to build a Restoration Hardware inspired hutch.

PureBond.
FORMALDEHYDE-FREE TECHNOLOGY

Step #5



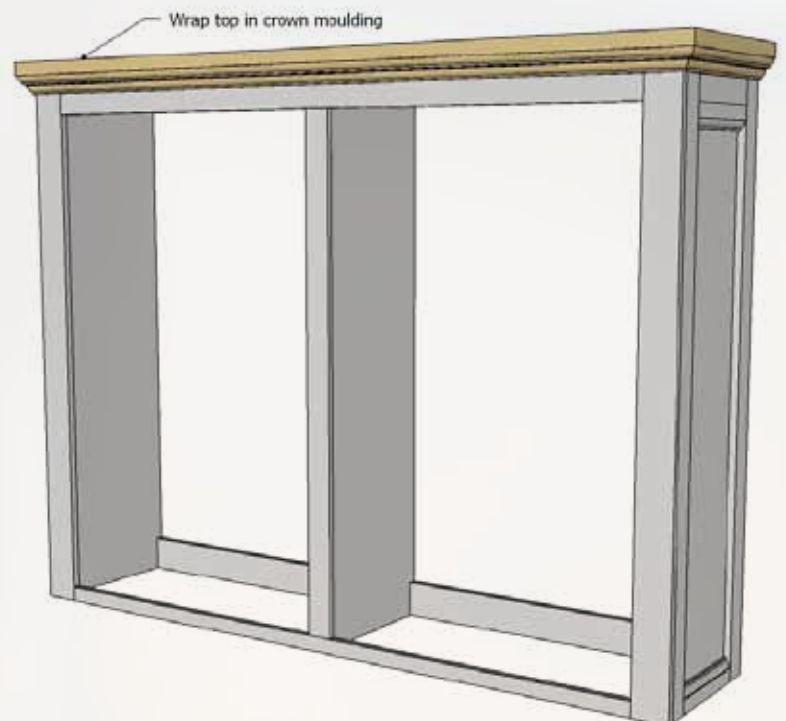
Now build the face frame as shown in diagram and attach to front of hutch. Fit so the ends are flush, making the corners look like one solid board.



Step #6



And add the crown moulding to top. You'll want to miter the corners for a finished look.





Hutch

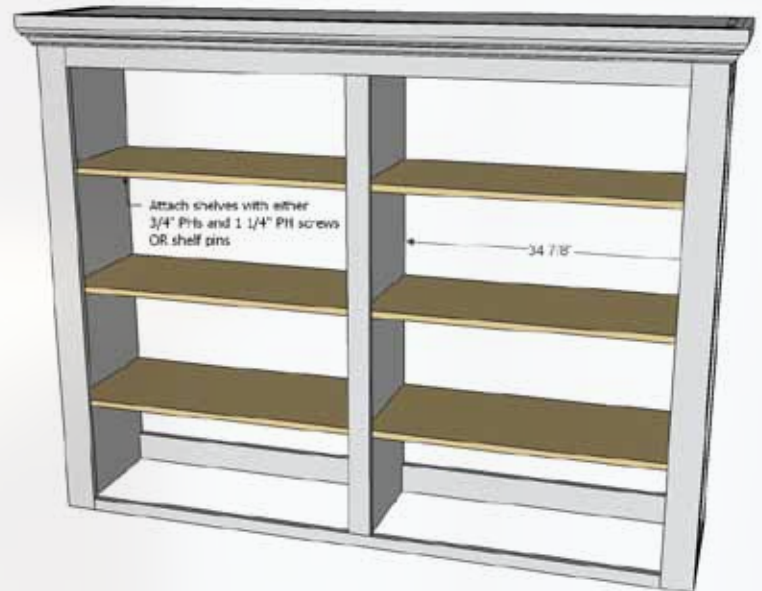
Free Plans to build a Restoration Hardware inspired hutch.

 PureBond.[®]
FORMALDEHYDE-FREE TECHNOLOGY

Step #7



Shelves can be added fixed with pocket holes underneath or shelf pins.



Step #8

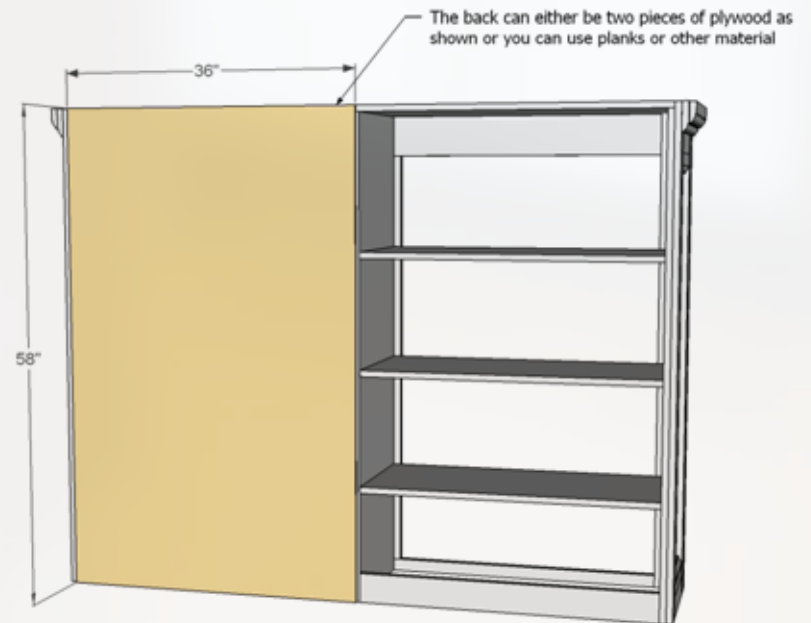


Because of the size of this project, you will need to add two back panels as shown here. Carefully glue and nail to back of project.

When you attach to your sideboard, be sure to securely screw to wall behind to prevent tipping forward, and also it is recommended that you attach to sideboard as well.

Preparation Instructions:

Fill all holes with wood filler and let dry. Apply additional coats of wood filler as needed. When wood filler is completely dry, sand the project in the direction of the wood grain with 120 grit sandpaper. Vacuum sanded project to remove sanding residue. Remove all sanding residue on work surfaces as well. Wipe project clean with damp cloth. It is always recommended to apply a test coat on a hidden area or scrap piece to ensure color evenness and adhesion. Use primer or wood conditioner as needed.



FEATURING

 PureBond.[®]

FORMALDEHYDE-FREE TECHNOLOGY

www.purebondplywood.com