



Wine Cabinet

Free Plans to build a Grandin Road
Inspired Adele Wine Cabinet

PureBond.
FORMALDEHYDE-FREE TECHNOLOGY

Materials and Tools:

Materials:

- 1-1/4" pocket hole screws
- 2" pocket hole screws
- 1-1/4" brad nails
- Edge banding for exposed edges of plywood, optional
- Three sets of 14" drawer slides
- Two sets of hinges
- Four door or drawer pulls
- Finishing Supplies

Tools:

- 3 - 2x2 at 6'
- 3 - 1x2 at 8'
- 2 - 1x3 at 6'
- 1 - 1x4 at 6'
- 1 - 1x6 at 3'
- Half sheet of 1/4" plywood
- One sheet of 3/4" plywood

Cut List:

- 4 - 2x2 at 32-3/4" - Legs
- 2 - 2x2 at 14-1/2" - Side Frames
- 2 - 2x4 at 14-1/2" - Side Frames
- 2 - 3/4" plywood at 14-1/2" x 25-3/4" - Side Panels
- 7 - 1x2 at 28" - Stretchers & Drawer Dividers
- 1 - 1x2 at 3-3/4" - Drawer Divider
- 2 - 3/4" plywood at 15-1/4" x 28" - Shelves
- 1 - 3/4" plywood at 17-1/2" x 31" - Top
- 1 - 1/4" plywood at 29-1/2" x 30-1/2" - Back
- 1 - 1x6 at 27-3/4" - Wine Drawer Front
- 2 - 1x4 (ripped to 2-7/8") at 14-1/2" - Wine Drawer Sides
- 1 - 1x4 (ripped to 2-7/8") at 27" - Wine Drawer Back
- 1 - 3/4" plywood at 14-1/2" x 25-1/2" - Wine Drawer Bottom
- 4 - 1x3 at 12-1/2" - Lower Drawer Box Sides
- 4 - 1x3 at 12-5/8" - Lower Drawer Box Front & Back
- 2 - 1/4" plywood at 12-5/8" x 14" - Lower Drawer Box Bottom
- 2 - 1x2 at 8-13/16" - Door Frame
- 2 - 1x2 at 16-1/2" - Door Frame
- 2 - 3/4" plywood at 8-13/16" x 11-1/2" - Door Panels





Wine Cabinet

Free Plans to build a Grandin Road
Inspired Adele Wine Cabinet

PureBond.
FORMALDEHYDE-FREE TECHNOLOGY

Step #1



Cut the pieces for the legs, the side frames, and the side panels. Drill pocket holes in all four edges of the panels as well as each end of the frame pieces. Attach the frame pieces to the panels using glue and 1-1/4" pocket hole screws. The back side of the panels should be flush with the back side of the frame pieces.

Attach the assembly to the legs using glue and pocket hole screws. Use 1-1/4" through the panels into the legs, and 2" pocket hole screws through the frame pieces into the legs.

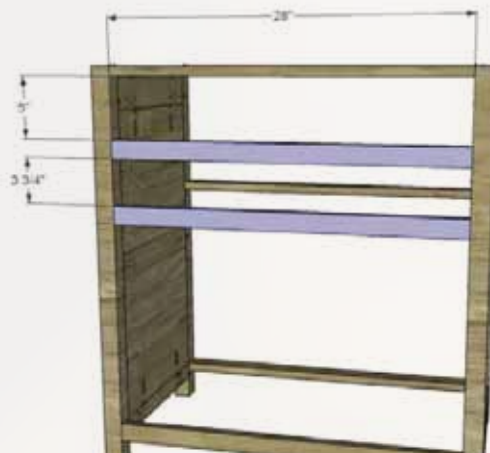
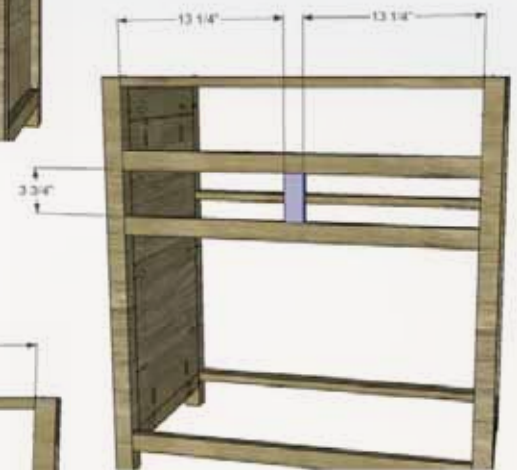
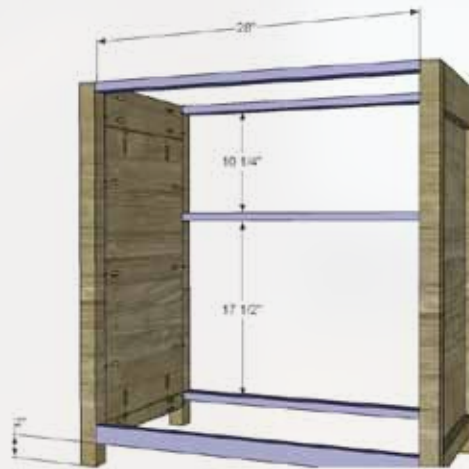
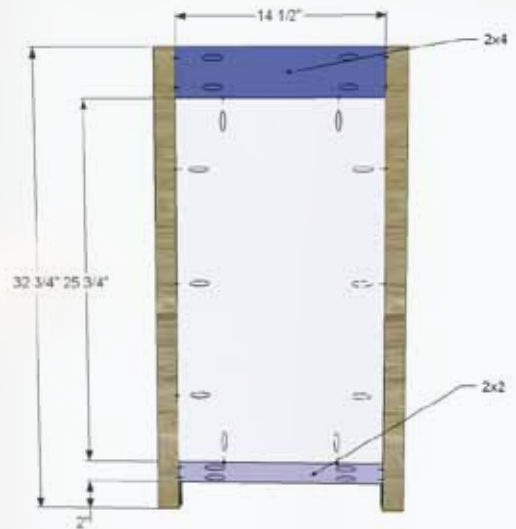
Step #2



Cut the pieces for the stretchers and the dividers. Drill pocket holes at each end of each piece.

Attach to the legs using glue and 1-1/4" pocket hole screws.

The lowest stretcher and the dividers will be positioned vertically (with the 1-1/2" edge facing out) and the other stretchers will be positioned horizontally.





Wine Cabinet

Free Plans to build a Grandin Road
Inspired Adele Wine Cabinet

 PureBond.
FORMALDEHYDE-FREE TECHNOLOGY

Step #3



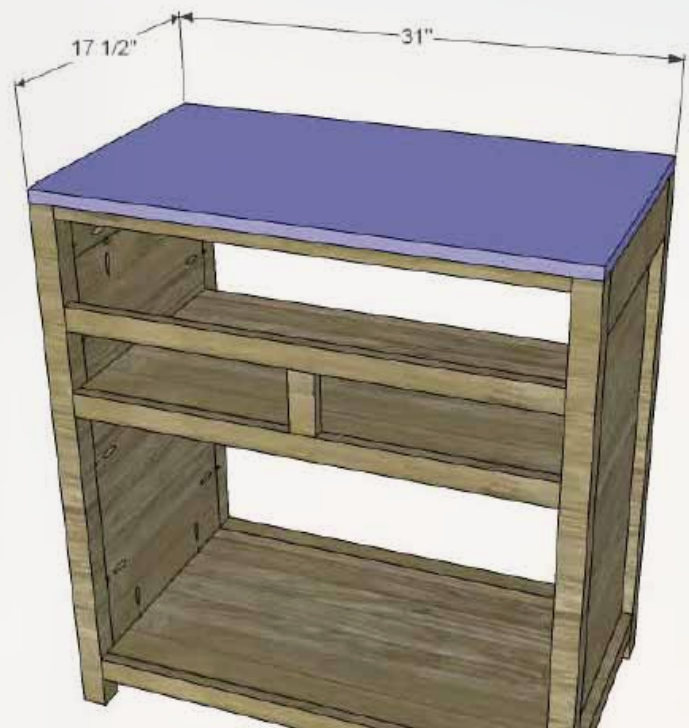
Cut the pieces for the shelves and drill pocket holes in all four edges. Attach as shown using glue and 1-1/4" pocket hole screws.



Step #4



Cut the piece for the top. Attach using glue and 1-1/4" brad nails through the top into the legs, side frames, and stretchers.





Wine Cabinet

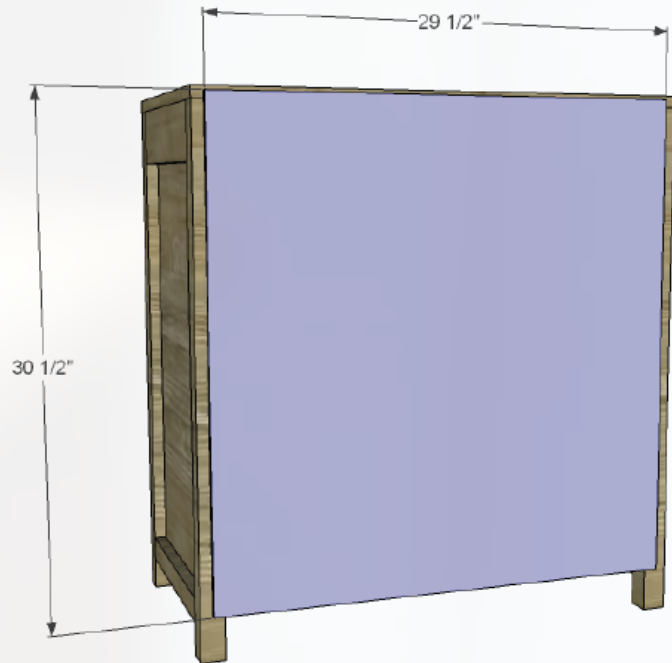
Free Plans to build a Grandin Road
Inspired Adele Wine Cabinet

PureBond.
FORMALDEHYDE-FREE TECHNOLOGY

Step #5



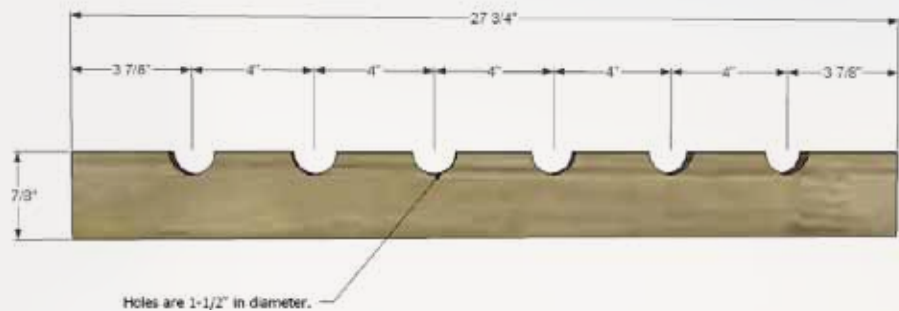
Cut the piece for the back. Attach using glue and 1-1/4" brad nails.



Step #6



Cut the pieces for the drawer boxes. Starting with the wine drawer front, it will be easier to drill a complete hole and cut the piece apart rather than drill half of a hole. Draw a line 2-7/8" from one long edge then mark the position for the centers of the circles - about 4" on center. Cut the holes using a 1-1/2" Forstner bit, paddle bit, or hole saw. Cut the piece apart at the line drawn 2-7/8" from the edge.





Wine Cabinet

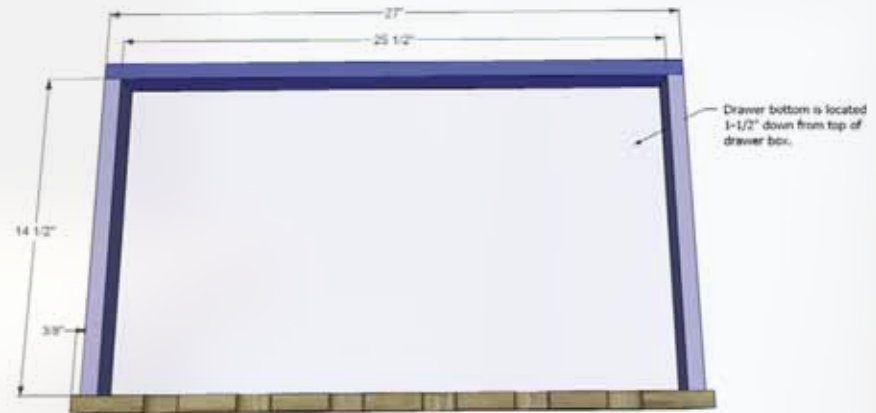
Free Plans to build a Grandin Road
Inspired Adele Wine Cabinet

PureBond.
FORMALDEHYDE-FREE TECHNOLOGY

Step #7



Drill pocket holes in each end of the side pieces and assemble the box using glue and 1-1/4" pocket hole screws. Cut the piece for the drawer bottom and drill pocket holes along all four edges. Position the drawer 1-1/2" down from the top and secure in place using glue and 1-1/4" pocket hole screws.



Step #8



Assemble the two smaller drawers as shown using glue and 1-1/4" pocket hole screws. Attach the bottoms using glue and 1-1/4" brad nails.

Install the drawer slides according to the manufacturer's instructions. For an easy tutorial, go here:

<http://designsbystudioc.com/how-to-install-drawer-slides/>

Cut the pieces for the drawer fronts. There will be a 1/8" gap around all sides. For another easy tutorial, go here:

<http://designsbystudioc.com/easy-way-to-install-drawer-fronts/>

Install the drawer hardware.





Wine Cabinet

Free Plans to build a Grandin Road
Inspired Adele Wine Cabinet

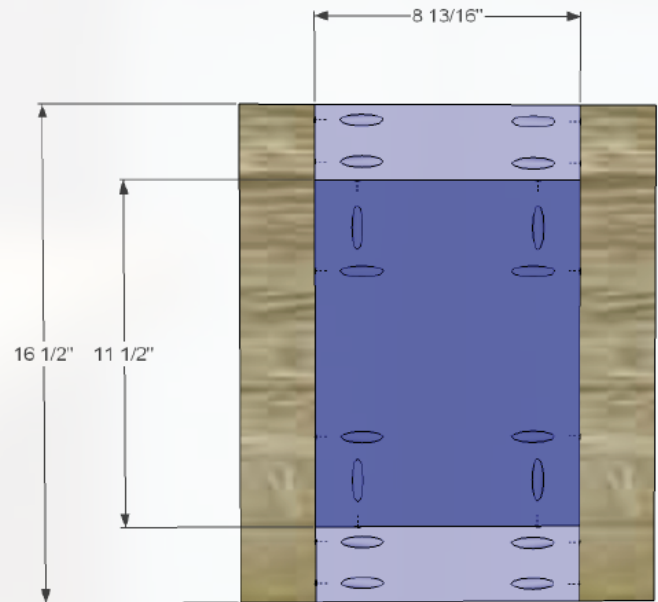
PureBond.
FORMALDEHYDE-FREE TECHNOLOGY

Step #9



Cut the pieces for the doors.
Drill pocket holes along all four edges of the panels as well as in each end of the shorter pieces of the frame. Attach the shorter frame pieces to the panels using glue and 1-1/4" pocket hole screws, then attach the longer pieces in the same manner. There will be a 1/8" gap around all sides as well as in between the doors. Install the hinges and the pulls according to the manufacturer's instructions.

Finish as desired.



There is a 1/8" gap around all sides
and in between the doors.



FEATURING

PureBond.

FORMALDEHYDE-FREE TECHNOLOGY

www.purebondplywood.com