



Bookcase

Free Plans to build a Bookcase.



Materials and Tools

MATERIALS:

- 1" pocket hole screws
- 1-1/4" pocket hole screws
- 1" brad nails
- 1-1/4" brad nails
- Wood glue
- Sandpaper (100, 150, 220 grits)
- Finishing supplies (primer & paint, or stain, sealer)
- Edge banding, optional

Lumber:

- 1 - 2' x 4' x 3/4" PureBond plywood project panel
- 2 - 4' x 4' x 1/2" PureBond plywood project panel
- 1 - 4' x 4' x 1/4" PureBond plywood project panel (Cherry was used for the example)

Tools:

- Jigsaw, table saw, miter saw, or hand saw
- Pocket hole jig
- Brad nailer
- Drill
- Pencil, ruler, square
- Tape measure
- Sander
- Iron for edge banding
- Edge banding trimmer or craft knife

Cut List:

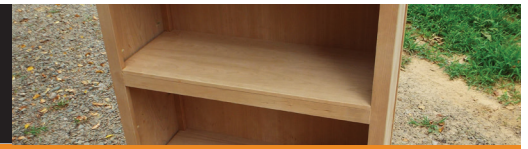
- 4 - 3/4" PureBond Plywood project panel at 1-1/2" x 47-1/4" - Sides
- 2 - 1/2" PureBond Plywood project panel at 10-1/2" x 44-1/4" - Side Panels
- 4 - 3/4" PureBond Plywood project panel at 1-1/2" x 10-1/2" - Side Framing
- 6 - 3/4" PureBond Plywood project panel at 1-1/2" x 10-1/2" - Shelf Supports
- 8 - 3/4" PureBond Plywood project panel at 1-1/2" x 27-3/4" - Stretchers
- 3 - 1/2" PureBond Plywood project panel at 11-15/16" x 29-1/4" - Shelves & Bottom
- 1 - 1/4" PureBond Plywood project panel at 29-1/4" x 46-1/2" - Back
- 1 - 1/2" PureBond Plywood project panel at 13" x 31-1/4" - Top



FEATURING
PureBond.
FORMALDEHYDE-FREE TECHNOLOGY



Bookcase



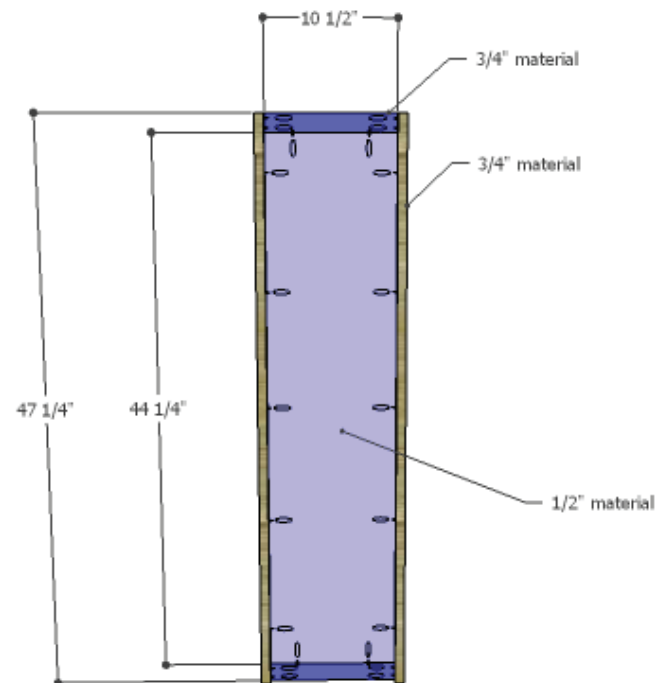
STEP 1

Notes:

Edge banding will be applied to the exposed edges of the plywood prior to assembly.

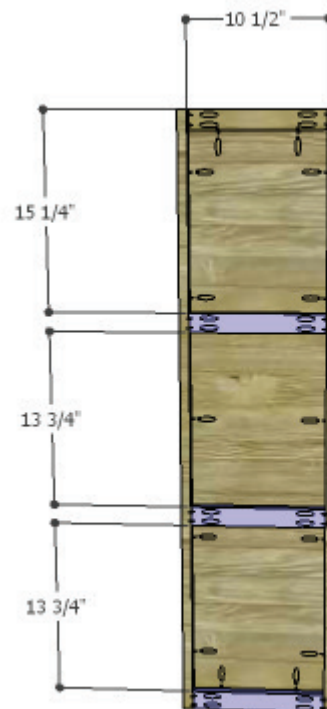
Cut the pieces for the sides, the side panels, and the side framing. With the pocket hole jig set for $\frac{3}{4}$ " material, drill pocket holes in each end of the side framing pieces. Attach the framing pieces to the side pieces using glue and 1- $\frac{1}{4}$ " pocket hole screws. The outside face of the framing pieces will be flush with the side edges of the side pieces.

Set the pocket hole jig for $\frac{1}{2}$ " material and drill pocket holes in all four edges of the side panels. Secure the panels to the framing pieces and the sides using glue and 1" pocket hole screws. The inside face of the side panels will be flush with the inside face of the framing pieces.



STEP 2

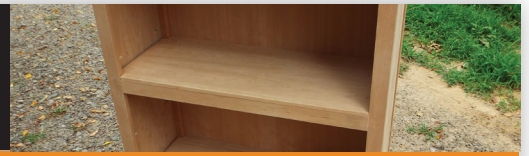
Cut the pieces for the shelf supports. Set the pocket hole jig for $\frac{3}{4}$ " material and drill pocket holes in each end. Secure to the side pieces as shown using glue and 1- $\frac{1}{4}$ " pocket hole screws.



FEATURING
 **PureBond.**
FORMALDEHYDE-FREE TECHNOLOGY

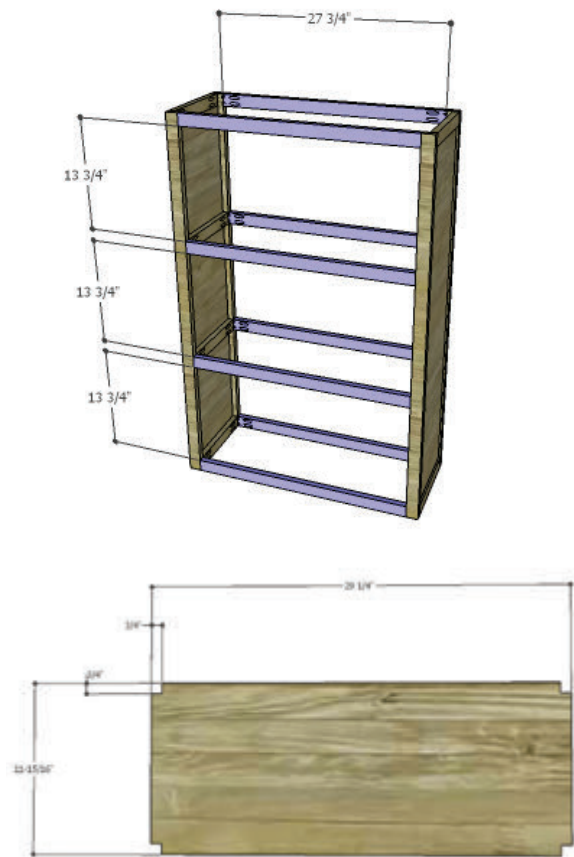


Bookcase



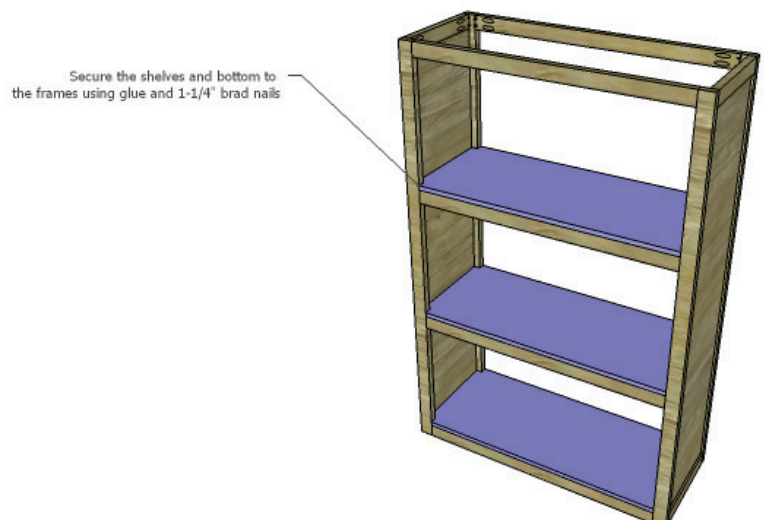
STEP 3

Cut the pieces for the stretchers and drill pocket holes in each end. Secure to the side pieces as shown (level with the shelf supports and the top of the side pieces) using glue and 1-1/4" pocket hole screws.



STEP 4

Cut the pieces for the shelves and cut the notches with a jigsaw. Insert the shelves in the cabinet so they each rest on a frame. Secure to the frame using glue and 1-1/4" brad nails.



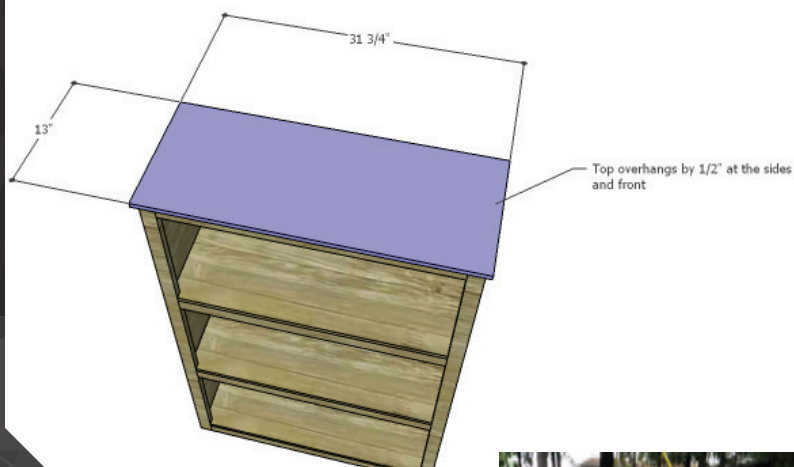
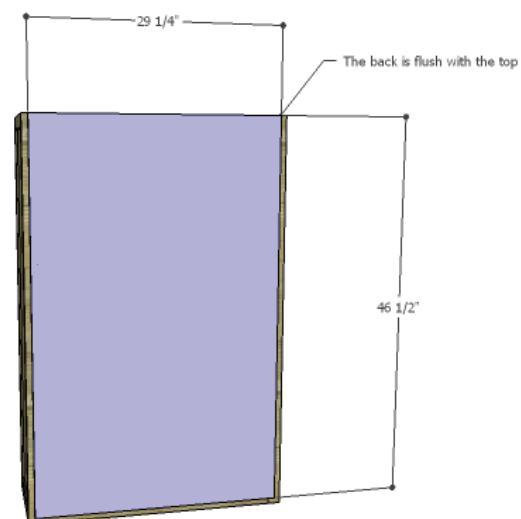


Bookcase



STEP 5

Cut the piece for the back. The top edge of the back will be flush with the top edge of the uppermost stretcher. Secure in place using glue and 1" brad nails.



STEP 6

Cut the piece for the top. The front and the sides will overlap by approximately 1/2". The back edge of the top will cover the top edge of the back. Secure the top in place using glue and 1-1/4" brad nails.

Finish as desired.



FEATURING
 **PureBond.**
FORMALDEHYDE-FREE TECHNOLOGY