

Eco Office

Open Shelf Base

Free Plans to build an Open Shelf Base

PureBond.
FORMALDEHYDE-FREE TECHNOLOGY

Materials and Tools:

MATERIALS:

- 1 - Sheet 3/4" Hardwood Plywood
- 1 - 1/4" sheet 1/4" hardwood plywood
- 1 - 1x2 @ 6 feet long (optional, see step 3)
- Edge Banding, 125' long roll, in matching wood grain
- 1 1/4" screws
- 2" screws
- 1 1/4" finish nails
- 1 1/4" pocket hole screws
- Wood Glue
- Wood Filler
- 120 Grit Sandpaper
- Wood Conditioner

Tools:

- Measuring Tape
- Square
- Pencil
- Safety Glasses
- Hearing Protection
- Kreg Jig™
- Drill
- Circular Saw
- Table Saw
- Nailer
- Sander
- Level
- Countersink Drill Bit
- Paint Brush

Cut List:

- 4 - 3/4" plywood 22" x 15 1/2" (Shelves)
- 2 - 3/4" plywood 22" x 26 1/2" (Sides)
- 1 - 1/4" plywood @ 17" x 26 1/2" (Back)
- 2 - 1x2 @ 15 1/2"
- 2 - 1x2 @ 19"

General Instructions:

Please read through the entire plan and all comments before beginning this project. It is also advisable to review the Getting Started Section. Take all necessary precautions to build safely and smartly. Work on a clean level surface, free of imperfections or debris. Always use straight boards. Check for square after each step. Always predrill holes before attaching with screws. Use glue with finish nails for a stronger hold. Wipe excess glue off bare wood for stained projects, as dried glue will not take stain. Be safe, have fun, and ask for help if you need it. Good luck!

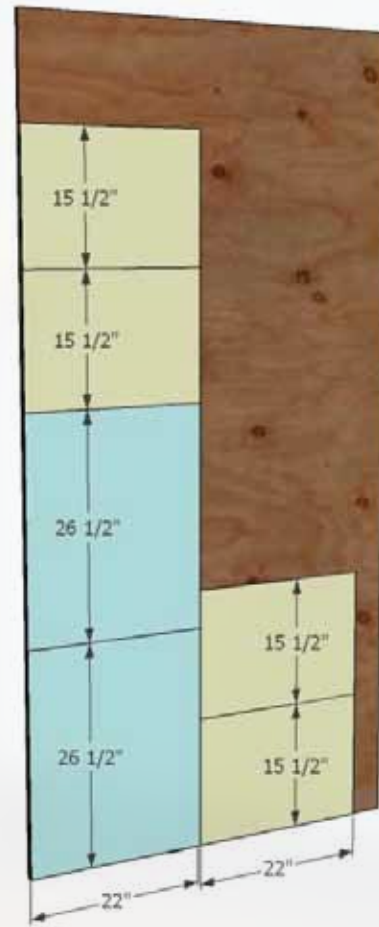


Step #1



There's more to cutting plywood than a chalk line and a circular saw. First of all, you have to consider the direction of the wood grain. And then you have to take into account the saw blade width. And then it's about conserving plywood for future projects and cutting tight, square corners - without having to finish the cuts with a jigsaw or handsaw. For plywood projects, I still like to treat pieces like "boards" - it makes the project that much easier and your wood grains will match right. You can use the scraps above to build a drawer (we'll get to that) or door, or even a desktop organizer. Save your scraps - it's the silver lining.

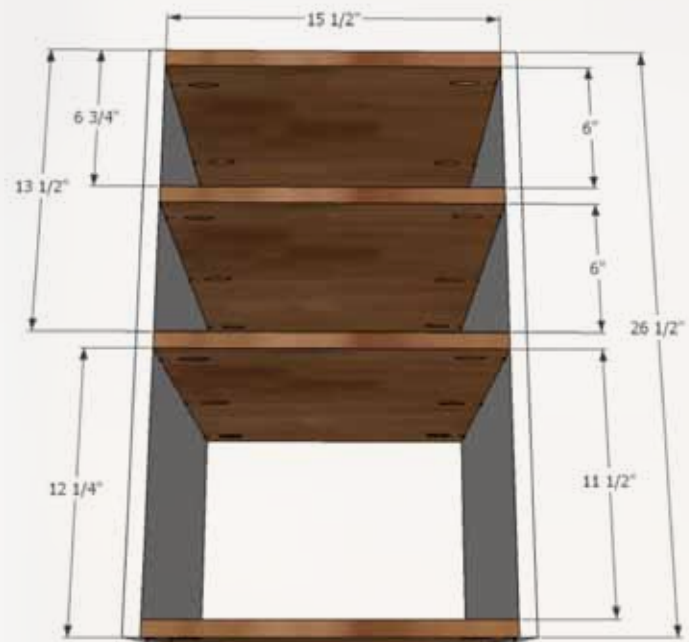
First rip your plywood into two 22" wide strips, 8 feet long. And then from these strips, cut your sides/shelves, treating the strips like boards.



Step #2



Build your cabinet as shown to the right. If you are using the Kreg Jig, use 1 1/4" pocket hole screws and wood glue, drilling holes set for 3/4" stock. You can alternatively use countersunk screws and wood glue.





Eco Office

Open Shelf Base

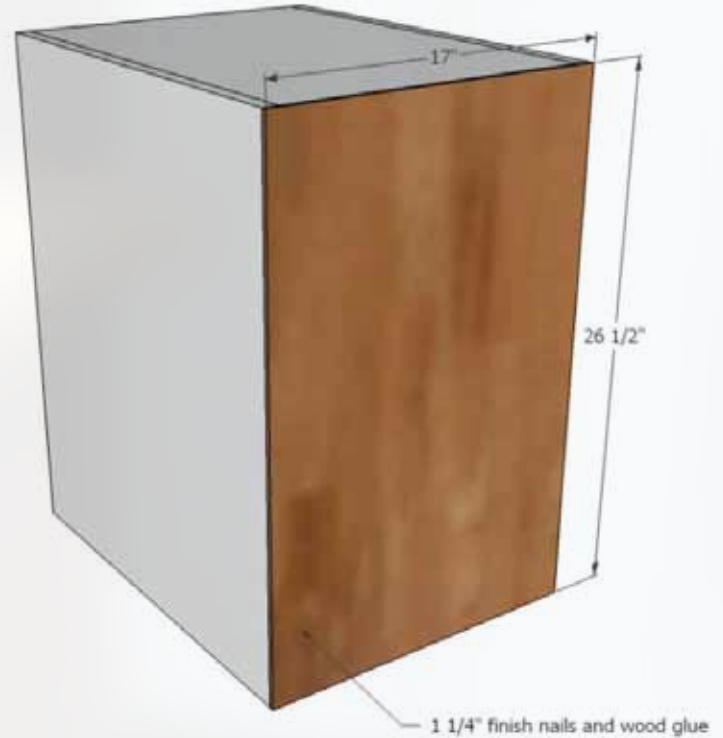
Free Plans to build an Open Shelf Base

PureBond.
FORMALDEHYDE-FREE TECHNOLOGY

Step #3



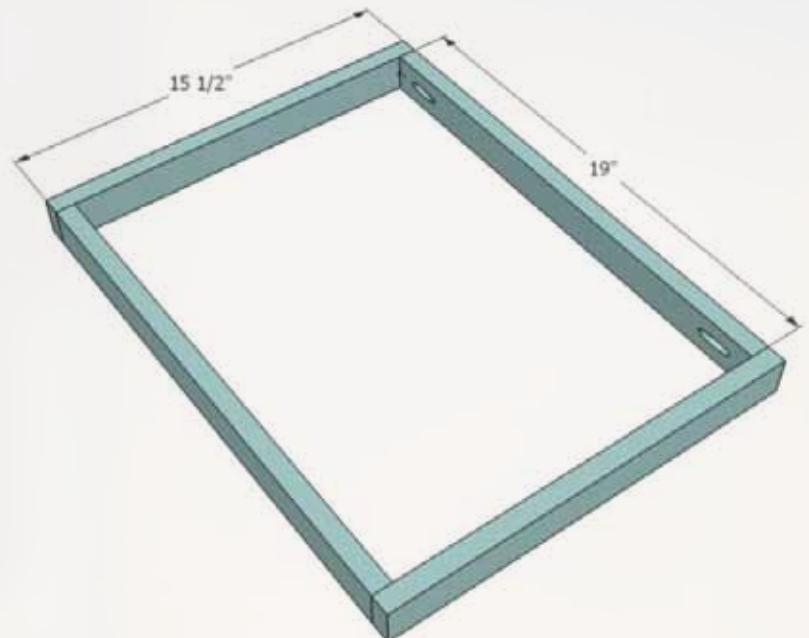
Adjust your shelf for square and attach the back. Make sure you attach to shelves too.



Step #4



From your scrap plywood, you can rip a 1 1/2" wide strip, and then use these for the base, or buy 1x2s and build the base that way. Your call.



Eco Office

Open Shelf Base

Free Plans to build an Open Shelf Base

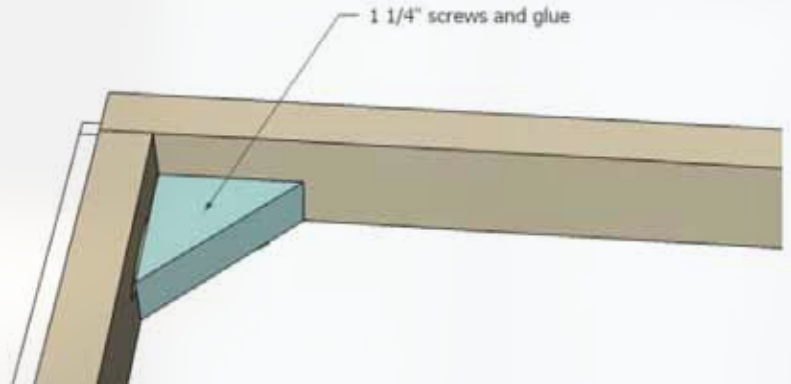
 PureBond.[®]
FORMALDEHYDE-FREE TECHNOLOGY

Step #5



We used pocket holes to attach the base to the bottom, but without, you can simply cut 1x2 scraps at 45 degree angles, and corner block, and then use this corner blocking to attach to the cabinet base.

The footer is centered on base, with 3/4" on all sides.



Step #6



Apply edge banding according to manufacturer instructions - it's easy to do.

Finishing Instructions

Fill all holes with wood filler and let dry. Apply additional coats of wood filler as needed. When wood filler is completely dry, sand the project in the direction of the wood grain with 120 grit sandpaper. Vacuum sanded project to remove sanding residue. Remove all sanding residue on work surfaces as well. Wipe project clean with damp cloth. It is always recommended to apply a test coat on a hidden area or scrap piece to ensure color evenness and adhesion. Use primer or wood conditioner as needed.



FEATURING

 PureBond.[®]

FORMALDEHYDE-FREE TECHNOLOGY

www.purebondplywood.com