



Printer's  
Triple Console Cabinet  
Free Plans to build a Triple Console Cabinet



## Materials and Tools:

### Materials:

- 3 sets euro style bottom corner mount drawer slides, 16" length
- 3 - sets inset hinges
- 24 - cup style handles
- 8 - 2x2 @ 8 feet long
- 6 - 1x3 @ 8 feet long
- 6 - 1x2 @ 8 feet long
- 1 sheet 3/4" PureBond plywood (get 1 1/2" sheets if you want shelves)
- 2 - 1x6 @ 10 feet long
- 1 1/4" and 2 1/2" PH screws
- Wood Glue

### Tools:

- Measuring Tape
- Square
- Pencil
- Safety Glasses
- Hearing Protection
- Kreg Jig™
- Drill
- Circular Saw
- Table Saw
- Nailers
- Sander
- Level

### Cut List:

#### Face Frames:

- 2 - 2x2 @ 72"
- 8 - 2x2 @ 34 1/2"
- 9 - 2x2 @ 22"

#### Door/Drawer Faces:

- 24 - 1x3 @ 21 3/4"
- 18 - 1x2 @ 21 3/4"
- 6 - 1x2 @ 22 1/2"

#### Main Box:

- 4 - 2x2 @ 15 3/4"
- 2 - 1x16 @ 69"
- 4 - 1x16 @ 31"

#### Drawers: (cut to fit your cabinet)

- 4 - 1x2 @ 15 3/4" (slide supports)
- 6 - 1x6 @ 19 1/2"
- 6 - 1x6 @ 17"





# Printer's Triple Console Cabinet

Free Plans to build a Triple Console Cabinet



## General Instructions:

Please read through the entire plan and all comments before beginning this project. It is also advisable to review the Getting Started Section. Take all necessary precautions to build safely and smartly. Work on a clean level surface, free of imperfections or debris. Always use straight boards. Check for square after each step. Always predrill holes before attaching with screws. Use glue with finish nails for a stronger hold. Wipe excess glue off bare wood for stained projects, as dried glue will not take stain. Be safe, have fun, and ask for help if you need it. Good luck!

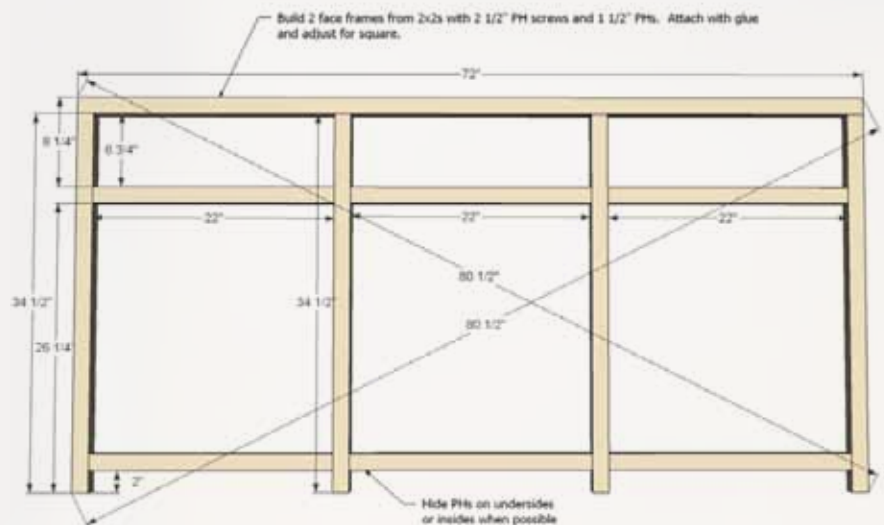
## Step #1

You'll probably want shelves, so go ahead and get the extra sheet of PureBond plywood, and just have all the plywood ripped into 15 3/4" wide strips, referred to as 1x16s throughout this plan. BUT if you don't want shelves, or have some scraps to use up, here's how you can get all the pieces on a single sheet.



## Step #2

Back face frame does not have the middle drawer dividers (2x2 @ 22")





# Printer's Triple Console Cabinet

Free Plans to build a Triple Console Cabinet

**PureBond.**  
FORMALDEHYDE-FREE TECHNOLOGY

## Step #3



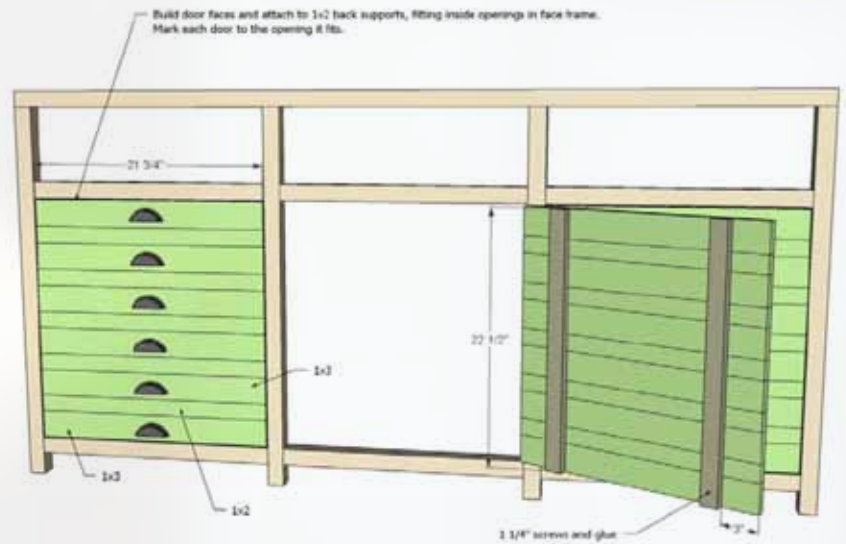
You'll want to build your doors now to fit the frame. Trust me on this one, lining up 11 boards and getting them all square is going to be a trick. Use the frame to help you build the door faces now.

On second thought - I'd recommend a 1x3 here on the back but a 1x2 will do the trick. Just a little more to bite into.

Once your doors are done, you can put aside.

### TIP:

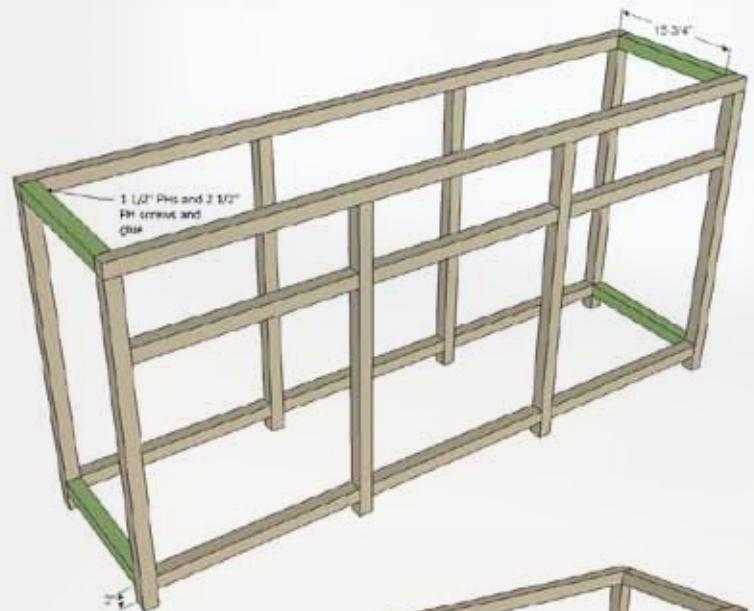
Test your drawer face boards for fit at this step too - everything is easier to do when your frame is laying flat down.



## Step #4



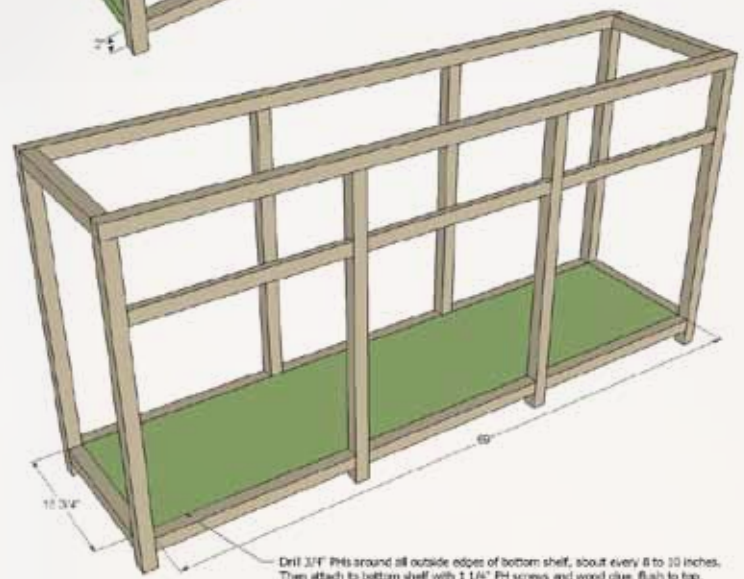
Now connect the two frames. Use glue and screws and check for square.



## Step #5



Now attach bottom inside frame.







Printer's  
Triple Console Cabinet  
Free Plans to build a Triple Console Cabinet

PureBond.  
FORMALDEHYDE-FREE TECHNOLOGY

## Step #6



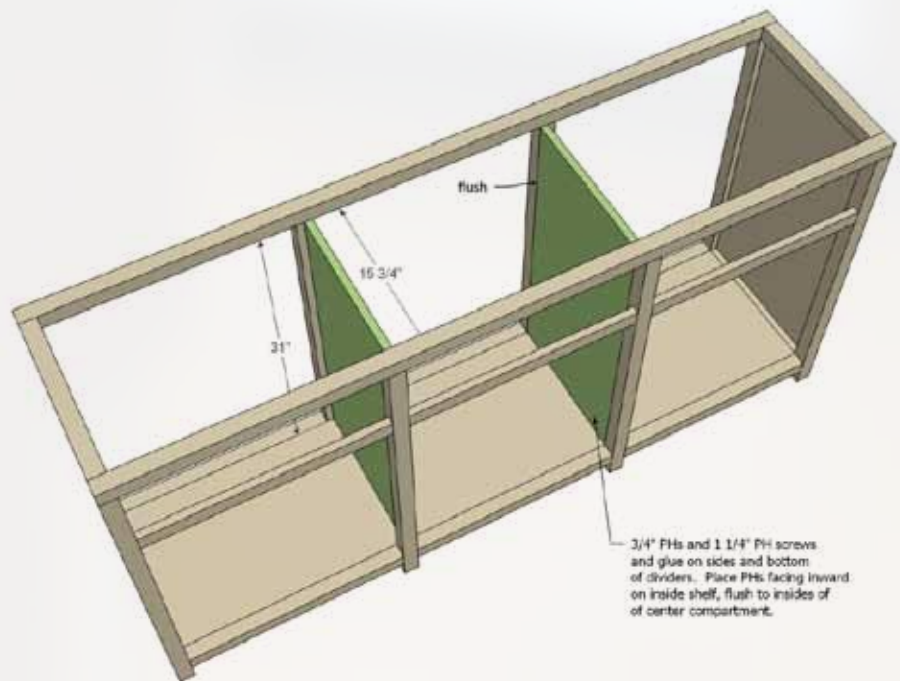
Now attach the sides.  
Check everything for square here.



## Step #7



Now add the dividers. Keep dividers flush to inside compartment.





# Printer's Triple Console Cabinet

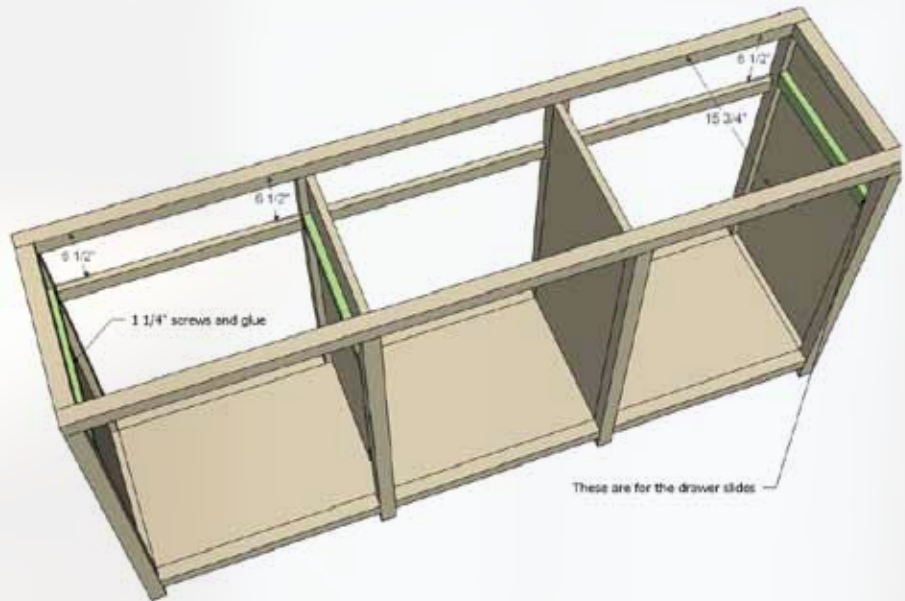
Free Plans to build a Triple Console Cabinet

**PureBond.**  
FORMALDEHYDE-FREE TECHNOLOGY

## Step #8



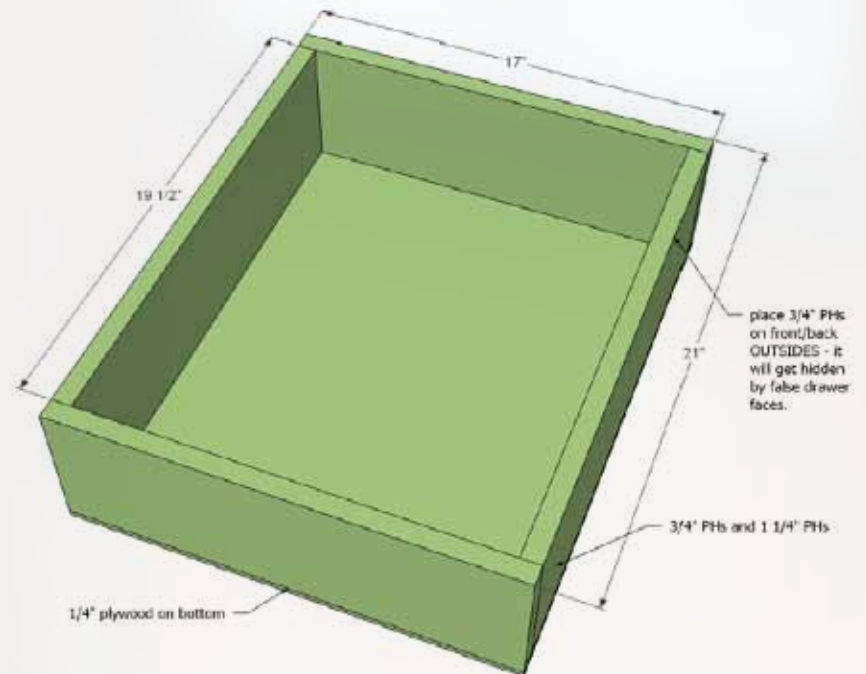
These guys are for attaching your drawer slides to later on. They only go on the outer compartments, and are not needed on middle compartment.



## Step #9



You'll need to build three drawers. A note on drawers - build to suit the finished opening of your cabinet and your drawer slides. The measurements I give are for a perfect build with perfect boards for drawer slides that use 1/2" space. Build to suit your cabinet for best fit.





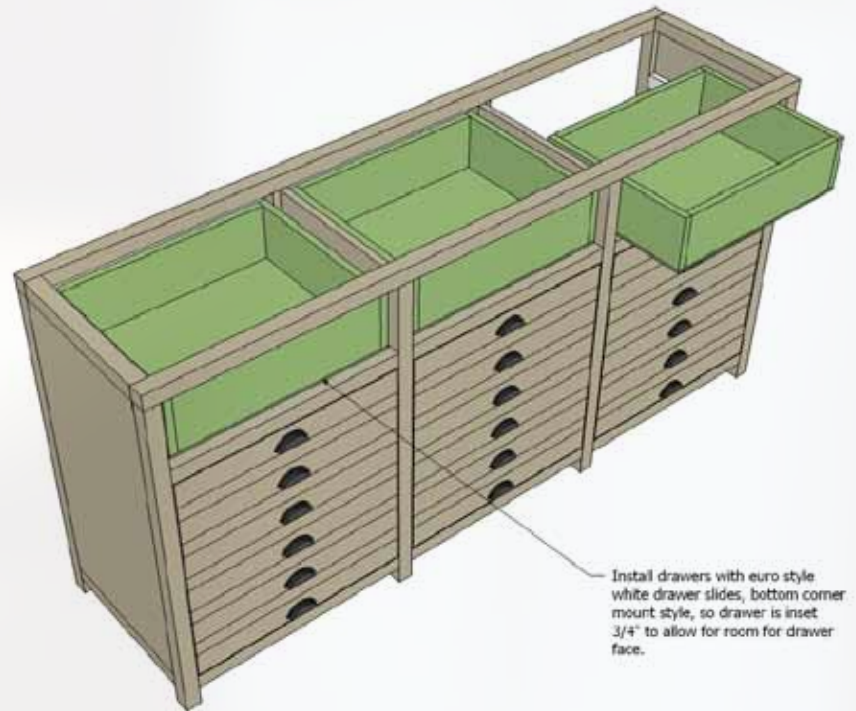
Printer's  
Triple Console Cabinet  
Free Plans to build a Triple Console Cabinet

**PureBond.**  
FORMALDEHYDE-FREE TECHNOLOGY

## Step #10



Install the drawers so they are inset  $\frac{3}{4}$ " on the front to allow for the drawer faces. They are nice deep drawers!



Install drawers with euro style white drawer slides, bottom corner mount style, so drawer is inset  $\frac{3}{4}$ " to allow for room for drawer face.

## Step #11



And then attach the drawer faces to front. Keep an even  $\frac{1}{8}$ " gap around all sides of drawer faces.



Nail drawer faces to the drawers with 1 1/4" finish nails, with a  $\frac{1}{8}$ " gap on all sides. Use glue to attach. Attach with screws from inside. Attach handles or knobs first - it'll be easier than attaching later on.





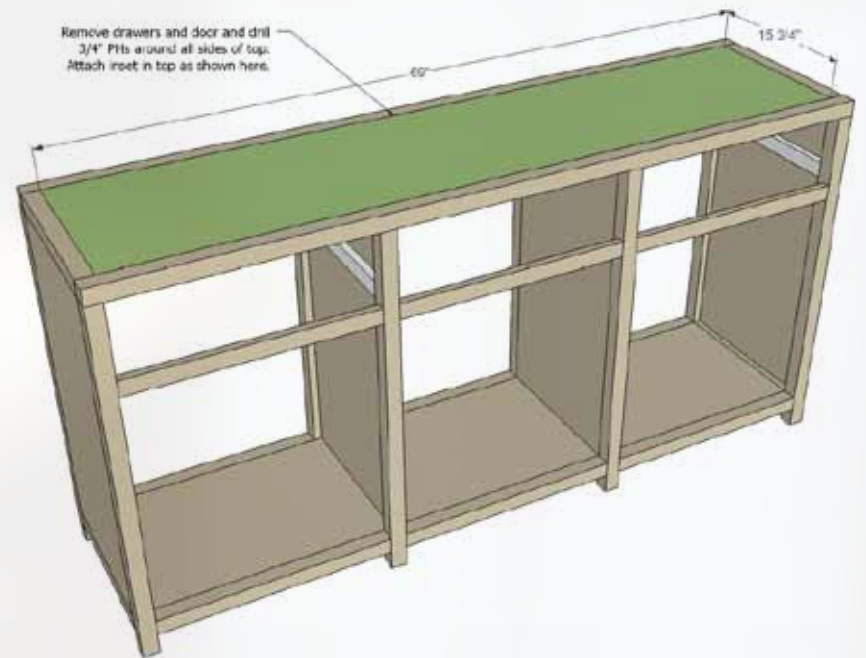
Printer's  
Triple Console Cabinet  
Free Plans to build a Triple Console Cabinet

**PureBond.**  
FORMALDEHYDE-FREE TECHNOLOGY

## Step #12



And finally add the top!



## Step #13

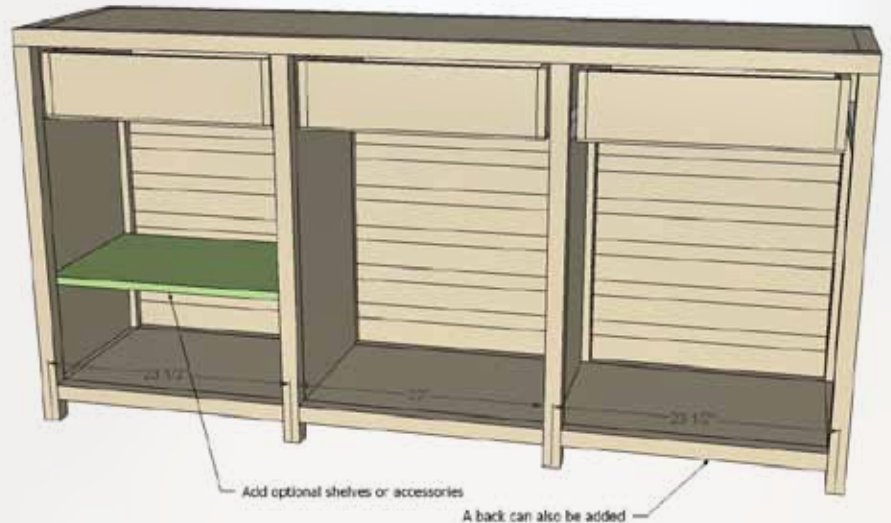


You can also add shelves, either fixed or with shelf pins.

And then if you want to put a back on, simply cut a piece of 1/4" PureBond plywood to the overall back size minus 1/2" and nail and glue on.

### Preparation Instructions:

Fill all holes with wood filler and let dry. Apply additional coats of wood filler as needed. When wood filler is completely dry, sand the project in the direction of the wood grain with 120 grit sandpaper. Vacuum sanded project to remove sanding residue. Remove all sanding residue on work surfaces as well. Wipe project clean with damp cloth. It is always recommended to apply a test coat on a hidden area or scrap piece to ensure color evenness and adhesion. Use primer or wood conditioner as needed.



FEATURING

**PureBond.**

FORMALDEHYDE-FREE TECHNOLOGY

[www.purebondplywood.com](http://www.purebondplywood.com)